

Designers and manufacturers
of watersports apparel
since 1991.



nookie

2015 CATALOGUE

Nookie specialises in the design and manufacture of technical clothing and equipment for watersports. A high quality, extensive range including waterproof outerwear, buoyancy aids, insulation layers, spraydecks, specialist outdoor activity centre equipment, water rescue equipment and accessories.

nookie.co.uk



Breaking dawn squirt boating session before work.
River Tamar, Cornwall, (just round the corner from our factory).



river
sea
surf



Product 2015 Guide

We've been making watersports clothing and technical equipment for kayaking, canoeing, stand up paddling (SUP) and general watersports since 1991. Our products are recognised globally for their high quality, performance, fit & style.

We like to make products whose function is as beautiful as their appearance. Without compromise we have always sought out the right way to do things, practically, functionally and ethically. We hope you enjoy our products as much as we do.

Our factory is in Cornwall, South-West England. Within an hour of lakes, rivers up to Class V+, estuaries/ocean and some of the best surf in Europe. An ideal location for our team of passionate water people to test and develop apparel and equipment for all kinds of watersports.

We are extremely proud of our ethical, environmental practices. We are big believers of up-cycling of materials and will use these where possible without ever compromising a product. We are proud to continue manufacturing a large percentage of our range in the UK, much of it in our specialist factory in Gunnislake, Cornwall.

We hope you enjoy visiting our website, wearing or using our products, and if you have any questions whatsoever, we welcome you to pick up the phone **+44 (0) 1822 832 333** or drop us an email info@nookie.co.uk

Enjoy the water!

Helen DAN Hazel



nookie.co.uk

Jackets

Legwear

Insulation

PFD's

Spraydecks

Hood, Hands, Feet

Rescue

Accessories



6

JA611-15
Venom

7

JA511-15
Aircrew

8

JA131-35
Storm

14

TR211-15
Rapid Semi-Dry

16

TR301-15
Evolution Dry

19

TR121-25
Pro Bib Pants
White Water Edition (Double Waist)

new

DR101-05
Charger Drysuit

22

NE401-05
Short Neo Strides

23

NE413-17
3/4 Neo Strides

23

NE411-15
Full Neo Strides

24

NE001-09
Ti Vest

30

BA003-04
Rivermonster XT

32

BA060-62
Explorer II

33

BA070-72
Ranger II

38

SD401-04
Ultimate Kevlar

39

SD161-65
Absolute

42

SD170-75
Surf

40

SD182-97
Cinch

44

SD301-02
Ocean

46

NE201-05
Ti Socks

47

NE211-15
Xtreme Socks

48

NE321-25
Insul8 Neo Gloves

48

NE311-15
Amara Gloves

49

NE301-05
Xtreme Gloves

50

AC042
15m Throwline

50

AC043
20m Throwline

51

AC049
Hornet

56

SW501-801
Hoodies and T-shirts

54

AK47
Foot Mat

54

AC018/50
Roofbar Pads

river. sea. surf.

We've been making watersports clothing and technical equipment for kayaking, canoeing, stand up paddling (SUP) and general watersports since 1991.

Popular with beginners, clubs, instructors and seasoned paddlers alike, we strive to bring you the equipment you need to make sure you get out on the water more often.

Our dedicated team of in-house designers and global testers use their detailed design, development and manufacturing skills to create the great quality gear we want to use, to make sure you will too.

nookie.co.uk



4



10

JA351-55
Pathfinder II

10

JA451-55
Shadow

25

NE041-44
Ti Top Deck

12/61

JA073-79
NKE Jacket

Jackets



18

TR111-15
Pro Bib Pants

new



15

TR401-05
Nimbus Over Trousers

new



20

SW701-05
Boardies

new



26

TH201-10
Iceman

new



27

TH401-05
Thermalcore100

29

TH501-11
Softcore

28

TH241-44
Thermal Base Pants

Legwear

Insulation



36

BA090-92
Traveller II

36/59

BA010-13
NKE Buoyancy Aid

FPD's



41

SD213-16
Shock

45

SD501-03
Como Touring

new



45

SD601-02
Atlantic Touring

new



41

SD200-01
Cockpit Cover

new



44/59

SD041-43
NKE Reinforced Deck

Spraydecks



49

AC200
Paddle Mitts

new



47

AK51
Skull Cap

61

HE001-05
Bumper Helmet

Head, Hands, Feet



53

AC020
Waist Towline

new



53

AK40
Fox Whistle

52

AC100-06
Floating Rope

new



55

AC061-62
Dry Packs

new



55

SM001
Smiley Nose Clip

60

PD001-02
Canoe/Raft Paddles

new

Rescue

Accessories



new this season

Our research and development team (with decades of combined experience) are always focussed on developing new products for you.



made in the U.K.

We are proud to continue manufacturing a large percentage of our range in the UK, much of it in our specialist factory in Gunnislake, Cornwall.

NKE centre range

A phenomenal range of gear for beginners and outdoor centres, focussing on ease of use and durability, with an exceptional reputation.





Waterproof and breathable 4ply dry suit.

EvoTX4 fabric - 4ply 160D Nylon – 20,000 W/P / 5,000 MVP – flexible and soft to the touch.

EvoTX 500D Reinforced fabric - 4ply 500D Nylon– 20,000 W/P / 3,000 MVP – on all high wear areas; elbows, seat, knees and all cuffs.

Hydrophobic and Hydrophillic coated with Durable Water Repellent (DWR).

Anatomical dynamic cut for active fit.

Seamless under-arms and seat for comfort and durability.

Asymmetric fabric socks with minimal seams and 500D Nylon throughout.

TIZIP Masterseal® with back entry.

TIZIP Masterseal® for relief.

Inner latex neck and wrist cuffs.

Hidden spraydeck clips in double-tunnel waist.

Adjustable outer waist tube with power-up velcro, cold finger assist loops, and shockcord lock, lined with sharkskin rubber for anti-ride up grippiness.

Neoprene outer neck and wrist cuffs for protection and extra seal.

Dive quality waterproof taping on all seams.

Low snag adjustable velcro outer ankle cuffs.

Retro-reflective detailing.

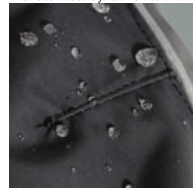
Made in the U.K.



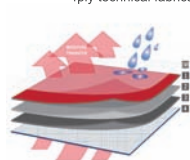
double layer neck drain



anatomical dynamic fit / DWR



4ply technical fabrics



TIZIP Masterseal® zips



Charger Drysuit

This smart British made Charger drysuit moves with you because of its anatomical dynamic fit. Made from the new tough waterproof and breathable EvoTX4 fabric (see below) with TIZIP Masterseal® zippers, the Nookie Charger will keep you comfortable and dry on or in the water.



Colourway:

Charcoal Grey/Lava Red
with Shadow Black reinforcement

Sizes:

S, M, L, XL, XXL

Product Code:

DR101-05

NEW EvoTX4 4ply Fabric

Designed specifically for the new Nookie drywear range, EvoTX4 from Nookie has been developed and tested with the sole focus on performance.

Proven to be tough for professional and expedition use, with quick drying properties and a flexible feel that is comfortable wear.

Waterproofness: 20,000mm/H₂O

Breathability: 5,000g/m²/24hrs

NEW EvoTX 500D Reinforced 4ply Fabric

Designed to compliment EvoTX4, EvoTX 500D is even tougher. The 500D Nylon construction is like Cordura but with the added benefit it is waterproof and breathable. The dense weave protects all high wear areas, such as the seat, knees and cuffs in a garment, without extra bulk.

Waterproofness: 20,000mm/H₂O

Breathability: 3,000g/m²/24hrs





Venom

This is the classic paddle jacket, clean, simple, double hard, double dry, reliable, bright. The Venom has everything you need.



Colourway:
Yellow

Sizes:
S, M, L, XL, XXL

Product Code:
JA611-15



latex neck with
neoprene outer neck



Xtetra 3ply Polyester Ripstop waterproof breathable fabric.
W/P: 15,000mm/H2O / Breathability: 5,000g/m2/24hrs
Full natural rubber latex neck & wrist seals.
Neoprene outer neck and wrist cuffs for protection and extra seal.
Floating neck for comfort and mobility.
Enduro Mesh reinforced elbows, shoulders and cuffs.
Hidden spraydeck clips in double-tunnel waist.
Comfortable, fully taped 3ply inner waist with elastic hem.
Adjustable neoprene outer waist tube with power-up velcro, cold finger grab loops and shockcord lock, lined with sharkskin rubber for anti-ride up grippiness.
Anatomical dynamic cut for active fit.
Dive quality waterproof taping on all seams.
Retro-reflective detailing.
Made in the U.K.

alex rodegro © paul meylahn

BA003-04

Rivermonster XT Buoyancy Aid

SD401-04

Ultimate Kevlar Spraydeck

JA611-15

Venom Jacket





Aircrew

3ply ripstop highly breathable jacket with adjustable neoprene power-up neck system. Designed for freestyle/freeride/play paddling/surf.

Colourway:
Blue

Sizes:
S, M, L, XL, XXL

Product Code:
JA511-15



power band neck adjustment



Xtetra 3ply Polyester Ripstop waterproof breathable fabric.
W/P: 15,000mm/H2O / Breathability: 5,000g/m2/24hrs
Unique power-up neck system with fully glued and blindstitched seams.
Glideskin lined neck for comfort.
Power band neck adjustment.
Full natural rubber latex wrist seals.
Neoprene outer wrist cuffs for protection and extra seal.
Enduro Mesh reinforced elbows and cuffs.
Hidden spraydeck clips in double-tunnel waist.
Dura-mesh glideskin inner waist, glued, blindstitched, taped
Adjustable neoprene outer waist tube with power-up velcro, cold finger grab loops and shockcord lock, lined with sharkskin rubber for anti-ride up grippiness.
Anatomical dynamic cut for active fit.
Dive quality waterproof taping on all seams.
Retro-reflective detailing.
Made in the U.K.



Storm

High performance sea kayaking jacket for changeable conditions. Wear it with confidence on all-day excursions. Latex cuffs, storm hood, double-waist and adjustable neoprene neck.



Colourway:
Yellow

Sizes:
S, M, L, XL, XXL

Product Code:
JA131--15

8

stow-away hood in a
zipped fleece lined collar



laser cut air vent



Xtetra 3ply Polyester Ripstop waterproof breathable fabric.

W/P: 15,000mm/H₂O / Breathability: 5,000g/m²/24hrs.

Comfortable, mid-weight and quick drying.

Natural rubber latex inner wrist seals with lined adjustable outer cuffs.

Articulated wired storm hood with one hand adjustability, stowed in a zipped soft fleece collar with laser cut air holes.

Splash proof zip front opening for venting and air flow.

Hand warmer pouch pocket.

Splash proof zipped shoulder pocket with drainage.

Hidden spraydeck clips in double-tunnel waist.

Comfortable, fully taped 3ply inner waist with elastic hem.

Adjustable neoprene outer waist with fabric tab velcro power up tabs.

Anatomical dynamic cut for active fit.

Dive quality waterproof taping on all seams.

Bright yellow with retro-reflective detailing for visibility.

Made in the U.K.

JA131-15
Storm Jacket

BA060-62
Explorer II Buoyancy Aid

SD161-65
Absolute Spraydeck





Pathfinder II

A comfortable & versatile half zip 2.5ply ripstop pullover waterproof watersports jacket with large front pocket and stow-away storm hood for touring and general use.

Colourway:

Red

Sizes:

S, M, L, XL, XXL

Product Code:

JA351-55

2.5ply Nylon Ripstop waterproof breathable fabric.

W/P: 10,000mm/H2O / Breathability: 5,000g/m2/24hrs

Light, flexible and durable.

Adjustable neoprene waist with tactile grippy velcro power-up tabs.

Pre-bent articulated arms.

Adjustable cuffs with tactile grippy velcro tab

Articulated wired storm hood with one hand adjustability, stowed in a zipped lycra lined collar.

Splash proof retro-reflective zip front opening for venting and air flow.

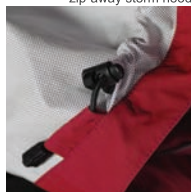
Large front zipped double-entry hand warmer pocket.

Hanging loop on back of neck.

Dive quality waterproof taping on all seams.

Retro-reflective detailing.

adjustable
zip-away storm hood



10



BA090-92
Traveller II Buoyancy Aid

JA351-55
Pathfinder II Jacket



JA451-55
Shadow Jacket

BA070-72
Ranger II Buoyancy Aid

NE411-15
Full Neo Strides

Shadow

Streamlined, waterproof and durable. The Shadow Jacket is the jacket you need in variable conditions. It performs when open canoeing, sea paddling or embarking on general adventures.

Colourway:
Shadow Black

Sizes:
S, M, L, XL, XXL

Product Code:
JA451-55

2.5ply Nylon Ripstop waterproof breathable fabric.
W/P: 10,000mm/H₂O / Breathability: 5,000g/m²/24hrs
Light, flexible and durable.
Adjustable rubber-lined waist with easy-use one hand adjusters.
Pre-bent articulated arms.
Adjustable cuffs with tactile grippy velcro tab
Articulated wired storm hood with one hand adjustability, stowed in a zipped lycra lined collar.
Splash proof retro-reflective zip front opening for venting and air flow.
Large front zipped double-entry hand warmer pocket.
Dive quality waterproof taping on all seams.
Retro-reflective detailing.



adjustable neoprene cuff





JA073-79
NKE Jacket

BA010-13
NKE Buoyancy Aid

NKE Jacket

Durable, waterproof and breathable ripstop nylon smock style jacket. Great entry-level waterproof top for beginners to outdoor activity centres.

Colourway:

Red/Yellow Yellow Orange Red Blue Green Grey

Sizes:

XXS/Junior XS/Junior S M L XL XXL

Product Code:

JA073 JA074 JA075 JA076 JA077 JA078 JA079



BA010-13
NKE Buoyancy Aid



2ply Nylon Ripstop waterproof breathable fabric.
Waterproofness: 5,000mm/H₂O.
Breathability: 3,000g/m²/24hrs.
Tough, durable, flexible for heavy duty use.
Adjustable rubber-lined waist with shockcord and cordlock.
Adjustable neoprene neck with velcro closure.
Front opening for venting and air flow.
Drying/hanging loop on external collar.
Neoprene cuffs.
Whole garment colour coded to indicate size.
Dive quality waterproof taping on all seams.



Rapid Semi-Dry

Semi Dry Trousers to keep the elements at bay with super comfortable neoprene inner ankle gaskets when fully dry trousers aren't necessary.

**Colourway:**

Smoke with Black Enduro Mesh

Sizes:

S, M, L, XL, XXL

Product Code:

TR211-15

14



low snag adjustable velcro cuff



long neoprene inner ankle cuff



bamboo 4ply with
Enduro Mesh reinforcement



4ply waterproof and breathable bamboo herringbone fabric with Durable Water Repellent (DWR).

Waterproofness: 20,000mm/H₂O

Breathability: 15,000g/m²/24hrs

Enduro Mesh reinforced seat and knees.

Long neoprene waterproof taped inner ankle cuff.

Seamless seat for comfort and durability.

Glued and blindstitched tall neoprene waist with anti-wicking properties.

Dive quality waterproof taping on seams.

Low snag adjustable velcro outer ankle cuffs.

Made in the U.K.

Nimbus Over Trousers

Comfortable, versatile, easy-on splash-proof over trousers. Make sure you take these great trousers wherever you go. They are perfect for slipping on over your trousers to create a waterproof and windproof barrier from the elements whenever you need them.



Colourway:
Shadow Black

Sizes:
S, M, L, XL, XXL

Product Code:
TR401-05



Legwear

Splash-proof and breathable over trousers.
2.5ply Nylon Ripstop waterproof breathable fabric with Durable Water Repellent.
W/P: 10,000mm/H2O / Breathability: 5,000g/m2/24hrs
Light, flexible and durable.
Soft, stretchy and comfortable neoprene waistband.
Seamless seat and minimal seams for comfort and durability.
Dive quality waterproof taping on all seams.
Low snag adjustable velcro outer ankle cuffs.

15





16

Evolution Dry

Super stylish British made, fully taped 4ply dry trousers with asymmetric dry socks (also available with latex ankle seals) are tough yet flexible and comfortable to wear. Designed and tested to work for you in harsh seas, whitewater rapids or lazy days on the water.



Colourway:

Charcoal Grey/Shadow Black with Lava Red trims

Sizes:

S, M, L, XL, XXL

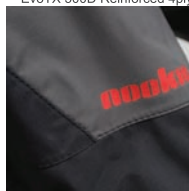
Product Code:

TR301-15

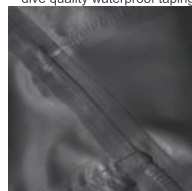
neoprene lined
adjustable velcro cuff



EvoTX 4ply and
EvoTX 500D Reinforced 4ply



hydrophillic grey coating with
dive quality waterproof taping



Waterproof and breathable 4ply dry trousers.

Available with either;

Asymmetric fabric socks with minimal seams and 500D Nylon throughout
or Latex ankle seals, trim down for perfect fit.

EvoTX4 fabric - 4ply 160D Nylon – 20,000 W/P / 5,000 MVP – flexible and soft to the touch.

EvoTX 500D Reinforced fabric - 4ply 500D Nylon– 20,000 W/P / 3,000 MVP – on all high wear areas; elbows, seat, knees and cuffs.

Hydrophobic and Hydrophillic coated with Durable Water Repellent (DWR).

Anatomical dynamic cut for active fit.

Seamless seat for comfort and durability.

Glued and blindstitched extra tall neoprene waist with anti-wicking properties.

Dive quality waterproof taping on all seams.

Low snag adjustable velcro outer ankle cuffs.

Retro-reflective detailing.

Made in the U.K.



BA003-04
Rivermonster XT Buoyancy Aid

SD161-65
Absolute Spraydeck

JA611-15
Venom Jacket

TR301-15
Evolution Dry Trousers



Pro Bib Salopette Dry Trousers

Dry, comfortable, easy-on and versatile all-rounder bib pants or salopettes designed for use when kayaking, fishing, wildlife photography near water, sailing, the list goes on...



Colourway:

Charcoal Grey with Shadow Black reinforcement

Sizes:

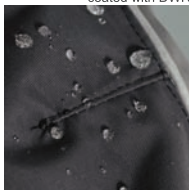
S, M, L, XL, XXL

Product Code:

TR111-15



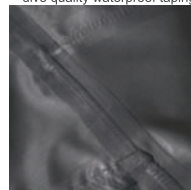
hydrophobic and hydrophillic coated with DWR



asymmetric fabric socks (left and right foot)



hydrophillic grey coating with dive quality waterproof taping



Waterproof and breathable 4ply dry trousers.

Stretchy neoprene bib with breathable wicking EvoTX4 fabric panels.

EvoTX4 fabric - 4ply 160D Nylon – 20,000 W/P / 5,000 MVP – flexible and soft to the touch.

EvoTX 500D Reinforced fabric - 4ply 500D Nylon– 20,000 W/P / 3,000 MVP – on all high wear areas; elbows, seat, knees and cuffs.

Hydrophobic and Hydrophillic coated with Durable Water Repellent (DWR).

Anatomical dynamic cut for active fit.

Asymmetric fabric socks with minimal seams and 500D Nylon throughout.

Masterseal Ti Zip for relief.

Seamless seat for comfort and durability.

Wide, comfortable and adjustable 50mm elastic shoulder straps.

Dive quality waterproof taping on all seams.

Low snag adjustable velcro outer ankle cuffs.

Retro-reflective detailing.

Made in the U.K.

Pro Bib Salopette Dry Trousers White Water Edition (Tall Double Waist)

Pair these stylish Bib Salopette Pants with a double seal jacket and you have a versatile, two-piece semi dry suit. This makes them a great choice for whitewater and they're also great for some demanding sea kayaking too, whatever the weather.



Colourway:

Charcoal Grey with
Shadow Black reinforcement
and Lava Red trim

Sizes:

S, M, L, XL, XXL

Product Code:

TR121-25



chest high double-waist
tunnel with neoprene fitted top



MasterSeal™ Ti Zip
with relief cover



asymmetric fabric socks
(left and right foot)



alex rodegro © jochen lettman



Legwear

19



Boardies

Great on a board, in a boat or in the beach bar! The Nookie Boardies have been revamped and are now available in two colourways.

Colourway:

Charcoal grey with yellow trim

Charcoal grey with blue trim

Sizes:

S, M, L, XL, XXL

Product Code:

SW701-705



Lycra easy-fly
with lace adjustment





NE005-08
Ti Vest S/S

SW701-05
Boardies

NE013-17
3/4 Neo Strides



Light weight and quick drying.
Lycra easy-fly with lace adjustment.
Zipped security pocket.
Large, useful, mesh drained hand pockets.
Soft, tactile and comfortable Polyester.
Twin needled with bar tacked reinforcement.
Available in two colourways.



Short Neo Strides

Great fitting neoprene wetsuit shorts with a grippy seat to stop you slip sliding around on your boat.



Colourway:
Black/Shadow Grey

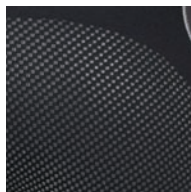
Sizes:
S, M, L, XL

Product Code:
JA401-05

Technical Clothing



hardflex reinforced
seat for grip and durability



Superior quality 3mm neoprene.

Glued and blindstitched seams to minimise flushing.

High back waist for warmth and comfort when sitting.

Smooth waist and cuff edge for anti-flushing contact fit.

Hardflex reinforced seat for grip and durability.

Soft, flexible, stretchy waist panel for exceptional comfort.

Dual dart crotch for comfort and unisex fit.

Great as liners or on their own.

22



TH501-11
Softcore Thermal Base S/S

BA090-92
Traveller II Buoyancy Aid

NE401-05
Short Neo Strides

Full Neo Strides

The 3mm full length neoprene wetsuit leggings designed using the same technology as expensive surfing suits now infamous across all watersports. Great fit for both men and women.

Colourway:
Black/Shadow Grey

Sizes:
S, M, L, XL

Product Code:
NE411-15



Superior quality 3mm neoprene full length wetsuit trousers. Glued and blindstitched seams to minimise flushing. High back waist for warmth and comfort when sitting. Pre-bent twisted articulated knees. Thin 2.5mm Trispan stretchy panel on back knees. Double layer (6mm) knee pad. Smooth waist and cuff edge for anti-flushing contact fit. Hardflex reinforced seat and knees for grip and durability. Soft, flexible, stretchy waist panel for exceptional comfort. Dual dart crotch for comfort and unisex fit. Great as liners or on their own.



thin 2.5mm Trispan stretchy panel on back knees

double layer (6mm) knee pad



Insulation

23

3/4 Neo Strides

Made from superior quality glued & blindstitched 3mm neoprene for warmth & comfort, these wetsuit pants or leggings are designed for all types of watersports.

Colourway:
Black/Shadow Grey

Sizes:
S, M, L, XL, XXL

Product Code:
NE013-17



thin 2.5mm Trispan stretchy panel on back knees



Superior quality 3mm neoprene 3/4 length wetsuit shorts. Glued and blindstitched seams to minimise flushing. High back waist for warmth and comfort when sitting. Pre-bent twisted articulated knees. Thin 2.5mm Trispan stretchy panel on back knees. Double layer (6mm) knee pad. Smooth waist and cuff edge for anti-flushing contact fit. Hardflex reinforced seat and knees for grip and durability. Soft, flexible, stretchy waist panel for exceptional comfort. Dual dart crotch for comfort and unisex fit.



Technical Clothing

24



Ti Vest

Made from 1.0mm metalite glideskin neoprene with 0.5mm flexible underarm panels. The ultimate watersports insulated wetsuit compression top.

Long Sleeve

Colourway:
Shadow Grey/Cyan trim

Sizes:
S, M, L, XL, XXL

Product Code:
NE000-04

Short Sleeve

Colourway:
Black and Shadow Grey/
White trim

Sizes:
S, M, L, XL, XXL

Product Code:
NE005-08



Super comfortable 1.0mm neoprene insulation layer.
Metalite neoprene reflects body heat to maximise warmth.
No under arm seams.
Thin 0.5mm Trispan stretchy underarm panels.
Hugs the body, reduces muscle vibration (minimising fatigue) and produces far less drag than a conventional cag.
Adjustable shockcord and (side-location) lock waist tube.
Smooth, comfortable glideskin cuffs and hem.
Flatlock seams for anti-chafe comfort.
Quick drying, simply shake it and put it back on.
Available in long or short sleeve.
River and surf essential.

Choose the short sleeve... you'll never want a shortie again!



NE005-08

Ti Vest Short Sleeve



Ti Top Deck - Custom Made

The combination of two hugely popular products in the Nookie range the Ti Vest Top and UK made spraydecks.

Sizes Top:

S, M, L, XL, XXL

Sizes Deck:

Small, Keyhole, Big

Product Code:

NE041-44



Top:

Super comfortable 1.0mm neoprene insulation layer.
Metalite neoprene reflects body heat to maximise warmth.
No under arm seams.

Thin 0.5mm Trispan stretchy underarm panels.
Hugs the body, reduces muscle vibration (minimising fatigue) and produces less drag than a conventional cag.
Adjustable shockcord and (side-location) lock waist tube.
Smooth, comfortable glideskin cuffs and hem.
Quick drying, simply shake it and put it back on.
Available in long or short sleeve.

Deck:

High-density 4mm neoprene
Stretchy neoprene waist
Shockcord/bungee deck with excellent pre-stretch to grip cockpit.

The two products are Jersey taped for the best seal.





Iceman

Popular with kayakers, fishermen, students, the RAF and even heating engineers the Nookie Iceman Polartec® all-in-one makes you look and feel like a fighter jet pilot.

Polartec® Classic 100 recycled fleece.

Warmth without weight.

Fabric contains at least 50% recycled content, saving natural resources and energy while reducing CO² emissions.

Highly breathable, quick drying, durable mid-weight insulation layer.

Machine washable.

Flexible two-way YKK main body zip, easy to put on/take off and easy relief.

Internal Softcore storm flap also covers zip slider at neck to keep zip away from your body.

Comfortable thumb holes for easy donning and off-water wear.

One zippered front hip pocket with mesh and fleece lining. Can access through drysuit relief zip.

Internal Softcore fleece foot stirrups hold the leg down with Polartec® fleece ankle cuff to avoid loss of insulation.

Close fit with flatlocked stitching.

No under arm seams to avoid chafing.

Softcore fleece lined cuffs and collar.

Technical Clothing

26

Colourway:

Airforce Green or Black Ice

Sizes:

S, M, L, XL, XXL

Product Code:

TH201-10



TH201-10
Iceman

TH401-05
Thermalcore 100



Thermalcore 100

Technical Polartec® versatile thermal mid-layer that offers climate control on the water and looks great when worn on it's own.

Colourway:

Black

Sizes:

S, M, L, XL, XXL

Product Code:

TH401-05



Insulation

Polartec® Classic 100 recycled fleece. Warmth without weight.

Fabric contains at least 50% recycled content, saving natural resources and energy while reducing CO² emissions.

Highly breathable, quick drying, durable mid-weight insulation layer.

Machine washable.

Half-zip for ventilation, retro-reflective with Nookie logo.

Internal Lycra storm flap also covers zip slider at neck to keep zip away from your body.

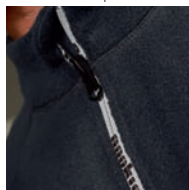
Comfortable thumb holes for easy donning and off-water wear.

Close fit with flatlocked stitching.

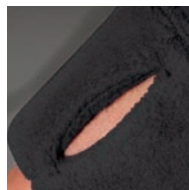
No under arm seams to avoid chafing.

Lycra lined cuffs and collar.

storm flap
covers zip slider at neck



comfortable thumb holes





foot stirrups



relief fly panel



Thermal Base Pants

Super soft and stretchy base layer insulation trousers/leggings with ProStretch30™ fabric. Designed for watersports and outdoor activities.

Colourway:

Grey

Sizes:

S, M, L, XL

Product Code:

TH241-24

ProStretch30™ fabric.

Soft stretchy base layer insulation.

UPF 30+ (Ultraviolet Protection Factor) Sun protection.

Woven-in antibacterial nanotechnology.

Warm, quick drying, windproof - designed for watersports.

Anti-Chafe flatlock comfort seams.

Foot stirrups to hold the leg down.

Soft elasticated waist band.

Machine washable.

Relief fly panel.

Unisex fit.



Softcore Thermal Base

4 way stretch, UPF30+, ultra warm, quick drying, compression with a soft furry inner for the ultimate insulation

Long Sleeve

Colourway:
Grey/Cyan trim

Sizes:
S, M, L, XL, XXL

Product Code:
TH501-05

Short Sleeve

Colourway:
Grey/Yellow trims

Sizes:
S, M, L, XL, XXL

Product Code:
TH507-11



4-way stretch for ultimate mobility & compression.
Soft fluffy brushed lining for warmth & insulation.
UPF 30+ (Ultraviolet Protection Factor) Sun protection.
Anti-Chafe flatlock comfort seam placement – no underarm seams, no front neck seam.
Warm, quick drying, windproof, breathable - designed for watersports.
Fast wicking, actively removing moisture away from the body keeping you dry.
Machine washable.
Unisex fit.

anti-chafe
flatlock comfort seam



Insulation

29



TH501-11

Softcore Thermal Base

SW701-05
Boardies

NE013-17

3/4 Neo Strides





Rivermonster XT

A high flotation 70N platform designed to be low profile to aid in aggressive swimming, self rescue and mobility, this 70N platform is the ultimate whitewater and rescue PFD. Expandable neoprene pocket space for slings, Krab's, whistles, energy bars, and harness systems...

Colourway:
Yellow/Grey

Sizes:
SM, LXL

Product Code:
BA003-04



Buoyancy Aids



knife park and krab park



seat belt webbing harness loops



* Experienced persons can tether the buoyancy aid to a sit harness or crotch straps so that it cannot be pulled off. The immense strength of the buoyancy aid internal structure would be of no use without this system because the buoyancy aid could simply be pulled off as the wearer's body starts to deform significantly at forces in excess of 1.4kN (150kg vertical weight equivalence).

High flotation 70N whitewater kayaking & rescue buoyancy aid/pfd.

Ergonomic fit : hinged 3D-flex foam platform wraps around the contours of all body shapes.

Unique - 6 points of once-only adjustment for superb contact and convenience.

'Contact fit' waist webbing prevents ride up.

High strength continuous (50mm automotive seat-belt webbing) one piece shoulder harness to crotch-strap/krab loops (two front, one rear) for extreme use*.

Quick release (high-vis yellow pull toggle) 50mm automotive seat-belt chest belt, removable and reversible for left or right handed users.

Tried and tested friction plate configurable for auto, positive, or zero release.

Flat profile, zipped, expanding, compartmentalised stretchy lycra lined front neoprene pocket, keeps front panel clean and protrusion free for safety.

Knife Park with quick release safety attachment.

Krab Park for cowstail/sling.

500D Cordura durable construction reinforced with bar tacks in critical areas.

Extra thick shoulder pads with enduro mesh reinforcement for portaging and clavicle protection.

High-vis panels and additional retro-reflective features for safety.

Lash points for accessories.

Widely used for whitewater kayaking, swift water rescue, emergency services, raft guiding.

CE Approved to EN393.

Rivermonster XT

Adjust your vest the first time you wear it and never need to again. Or tweak the fit for a different person, season, layering - instantly. Punch and carve down a class V canyon with the unrestricted kinetic ability of a slalom paddler. Inspect a hard-to-see rapid from an overhang, clipping in and out of belay without a fuss. Organise and access must-have tools one handed and without fiddly zips or velcro. Configure the chest belt for auto, positive, or zero release. Strap into a sling harness for an abseil or a rescue. Swim passively or aggressively with intelligently distributed high level flotation. Clamber onto rocks or rafts unhindered, with a completely smooth front panel free of protruding pockets. Be confident with unsurpassed critical (clavicle, kidney) impact protection, and the continuous seat-belt webbing internal harness. Be seen and safe...

JA611-15

Venom Jacket

SD401-04

Ultimate Kevlar Spraydeck

BA003-04

Rivermonster XT Buoyancy Aid



Explorer II

Designed for Sea Kayaking & Touring and a popular choice for outdoor professionals the Explorer II offers loads of pocket space with neoprene expandable pockets that don't hinder self-rescue when needed and is brighter, for greater visual impact than it's low-key equal the Ranger II.

Colourway:
Yellow/Black

Sizes:
SM, LXL, XXL

Product Code:
BA060-62



Buoyancy Aids



Durable 500D Cordura shell & smooth nylon lining.

Front zip with easy grip system.

'Contact fit' waist system.

6 points of shoulder & waist adjustment.

Bar-tacked reinforced shell for durability.

High visibility retro-reflective piping.

Expandable zipped neoprene front & back pockets.

Large back pocket (takes hydration system) with extra mesh pocket for flares etc.

Lots of D-rings, shockcord loops & lash points.

Neoprene padded shoulder straps.

CE ISO 12402 Certification.



Ranger II

Low visual impact buoyancy aid which is ideal for canoeing/ open boating. A popular choice for estuary fishing, wildlife photography near water or canoe trips. Multiple stretchy neoprene front & back pockets are essential if you need to keep your bits'n'pieces separate & organised.



Colourway:
Olive Green/Grey

Sizes:
SM, LXL, XXL

Product Code:
BA070-72



- Durable 500D Cordura shell & smooth nylon lining.
- Front zip with easy grip system.
- 'Contact fit' waist system.
- 6 points of shoulder & waist adjustment.
- Bar-tacked reinforced shell for durability.
- High visibility retro-reflective piping.
- Expandable zipped neoprene front & back pockets.
- Large back pocket (takes hydration system) with extra mesh pocket for flares etc.
- Lots of D-rings, shockcord loops & lash points.
- Neoprene padded shoulder straps.
- CE ISO 12402 Certification.

PFD's





JA351-55
Pathfinder II Jacket

VALLEY

BA040-42
Explorer II Buoyancy Aid

SD501-03
Como Touring Deck

river
sea
surf



Traveller II

A great all round recreational choice, the Traveller II buoyancy aid is designed for use from sailing to sit on top kayaking. Pocket space front & back, a great fit with multiple adjustments hold the platform in place, keeping you safe but with total freedom of movement.

Colourway:
Red/Black

Sizes:
SM, LXL, XXL

Product Code:
BA090-92

Hard-wearing Cordura® 500D shell & smooth nylon lining.
Large front zipped pocket with drainage.
Large back pocket (takes hydration system).
Easy access front zip with grip system.
'Contact fit' waist system.
6 points of shoulder & waist adjustment.
Bar-tacked reinforced shell for durability.
High visibility retro-reflective piping.
CE ISO 12402 Certification.

Buoyancy Aids

NKE Buoyancy Aid

Colour coded by size, this entry level buoyancy aid is perfect for recreational use for individuals and outdoor activity providers. Made with tough Cordura® 500D, this buoyancy aid is built to last.

Colourway:

Yellow Red Blue Green

Sizes:

Junior SM LXL XXL

Product Code:

BA010 BA011 BA012 BA013

Hard-wearing Cordura® 500D shell & smooth nylon lining.
Whole buoyancy aid colour coded to indicate size.
Easy access front zip with grip system.
'Contact fit' waist system.
5 points of shoulder & waist adjustment.
40mm waist belt for secure fit with no ride up.
Bar-tacked reinforced shell for durability.
High visibility retro-reflective piping.
Optional crotch straps (provided with Junior size).
CE ISO 12402 Certification.



Customised logo printing.

BA010-13
NKE Buoyancy Aid



Ultimate Kevlar

Bulletproof deck for whitewater kayaks. Latex grip and Kevlar protection.

Colourway:

Black with White print - Kevlar reinforced

Sizes:

Deck - Keyhole, Bigdeck

Waist - XS, SM, LXL

Product Code:

SD401-04



latex coated underside



40mm twisted webbing fail safe release strap



Kevlar reinforced deck panels for durability and protection.

Natural latex coated underside for dryness, grip and fitted seal.

Tough 4mm Armotex neoprene deck.

Super stretch tall neoprene waist tube.

Smooth waist edge for anti-flushing contact fit.

Glued and blindstitched jersey taped dry seams.

10mm Shockcord/bungee deck with excellent pre-stretch to grip cockpit.

40mm twisted webbing fail safe release strap.

Reinforced deck print for durable finish.

Made in the U.K.

38



SD401-04

Ultimate Kevlar Spraydeck

© alex rodegro



Absolute

Positive grip dry deck for whitewater kayaks with latex underside.



Colourway:

Black with Yellow print/Black with Black print

Sizes:

Deck - Keyhole, Bigdeck

Waist - XS, SM, LXL

Product Code:

SD161-65

Natural latex coated underside for dryness, grip and fitted seal.

Tough 4mm Armotex neoprene deck.

Super stretch tall neoprene waist tube.

Smooth waist edge for anti-flushing contact fit.

Glued and blindstitched jersey taped dry seams.

10mm Shockcord/bungee deck with excellent pre-stretch to grip cockpit.

40mm twisted webbing fail safe release strap.

Reinforced deck print for durable finish.

Made in the U.K.



smooth waist edge
for anti-flushing contact fit



also available in black with
black print





Cinch

Intermediate deck for all kayaks and disciplines. Easier to fit on and off than the top spec spraydecks but still with a great grip for confidence in lighter whitewater.

Colourway:

Black with Blue print/Black with Black print

Sizes:

Deck - Keyhole, Bigdeck

Waist - XS, SM, LXL

Product Code:

SD182-97



40mm twisted
webbing fail safe release strap



Tough 4mm Armotex neoprene deck.
Super stretch tall neoprene waist tube.
Smooth waist edge for anti-flushing contact fit.
Glued and blindstitched jersey taped dry seams.
10mm Shockcord/bungee deck with excellent pre-stretch to grip cockpit.
40mm twisted webbing fail safe release strap.
Reinforced deck print for durable finish.
Made in the U.K.

40



JA351-55
Pathfinder II Jacket

BA090-92
Traveller II Buoyancy Aid

SD182-97
Cinch Spraydeck

Shock



Extremely popular entry level neoprene spraydeck.
Easy to put on or take off, with knee release system for more confidence.

Colourway:

Black

Sizes:

Deck - Keyhole, Bigdeck

Waist - XS, SM, LXL

Product Code:

SD161-65



4mm neoprene deck.

25mm adjustable webbing knee release strap.

Super stretch tall neoprene waist tube.

Glued and blindstitched jersey taped dry seams.

10mm Shockcord/bungee deck with excellent pre-stretch to grip cockpit.

40mm twisted webbing fail safe release strap.

fail safe stitching on shock cord



25mm adjustable webbing knee release strap



41

Cockpit Cover

Super stretchy neoprene cockpit cover with a powerful shockcord. Keeps kit in your boat, reduces noise and fuel consumption when your boat is on your car.



Colourway:

Charcoal Grey with black and white trim

Sizes:

Keyhole

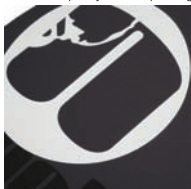
Big Deck

Product Code:

SD200-01



quality screen printing



40mm twisted webbing fail safe release strap



3mm neoprene deck.

Now available in two sizes to fit even better.

10mm Shockcord/bungee deck with excellent pre-stretch to grip cockpit.

40mm twisted webbing fail safe release strap.



Surf

The best surf spraydeck on the market! Used by world champions and 2014 Santa Cruz European Champion Chris Hobson, this is the weapon of choice in any surf condition.



Colourway:

White with Black print/Black with Black print

Sizes:

Deck - Small, Keyhole

Waist - XS, SM, LXL

Product Code:

SD170-75

40mm twisted
webbing fail safe release strap



NE005-09
Ti Vest

SD170-75
Surf Skirt Spraydeck

Tough 4mm Armotex neoprene deck.
Super stretch tall neoprene waist tube.
Smooth waist edge for anti-flushing contact fit.
Glued and blindstitched jersey taped dry seams.
10mm Shockcord/bungee deck with excellent
pre-stretch to grip cockpit.
40mm twisted webbing fail safe release strap.
Reinforced deck print for durable finish.
Made in the U.K.





Colour coded 25mm webbing release strap to indicate size



Adjustable cockpit size with shockcord and cord wheel



NKE Reinforced

Extremely adjustable recreational Nylon spraydeck to fit all paddlers and kayaks in calm waters. Reinforced with 500D Cordura for durability.

Colourway:

Black with colour coded release strap

Sizes:

Deck - Keyhole, Bigdeck, Extra Big
Waist - One Size

Product Code:

SD040-44

Flexible, durable, waterproof Nylon spraydeck.

Tough 500D Cordura reinforced deck panels.

Adjustable one size waist with shockcord and lock.

Adjustable cockpit with shockcord and cord wheel.

Dive quality waterproof taping on all seams.

25mm webbing fail safe release strap, colour coded to indicate deck size.

Excellent for personal use, or every day commercial outdoor activity centre use.

44

Ocean

Developed in response to an increased demand from kayakers struggling to find spraydecks small enough to fit their sea kayaks, especially with a traditional style cockpit.



Colourway:

Black with Black print

Sizes:

Deck - Ocean
Waist - XS, SM, LXL

Product Code:

SD300-03

Tough 4mm Armotex neoprene deck.

Super stretch tall neoprene waist tube.

Smooth waist edge for anti-flushing contact fit.

Glued and blindstitched jersey taped dry seams.

10mm Shockcord/bungee deck with excellent pre-stretch to grip cockpit.

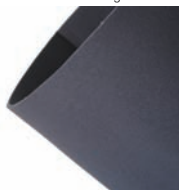
40mm twisted webbing fail safe release strap.

Reinforced deck print for durable finish.

Made in the U.K.



smooth waist edge for anti-flushing contact fit



40mm twisted webbing fail safe release strap



Atlantic Touring



Protection when ocean paddling/sea kayaking, or inland kayak touring with comfortable, breathable, waterproof 4ply waist and grippy neoprene deck.

Colourway:

Charcoal Grey/Black with Yellow Trim

Sizes:

Deck - Keyhole, Bigdeck, Extra Big

Waist - One Size

Product Code:

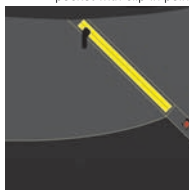
SD601-03



Tough 4mm Armotex neoprene deck.
EvoTX4 4ply breathable and waterproof waist tube.
Adjustable stretchy waist top with velcro power-up.
Dual access pocket with YKK zipped closures, mesh drain and clip-in point.
Elasticated 6 point adjustable shockcord deck lines.
Removable adjustable 25mm elastic braces.
Dive quality waterproof taping on all seams.
10mm Shockcord/bungee deck with excellent pre-stretch to grip cockpit.
40mm twisted webbing fail safe release strap.
Reinforced deck print for durable finish.
Made in the U.K.



dual access pocket with clip-in point



elasticated 6 point adjustable shockcord deck lines



45

Como Touring

Intermediate touring spraydeck. 2.5ply ripstop breathable and waterproof waist tube with neoprene deck. Easy to put on or take off, with knee release system for more confidence.

Colourway:

Black with red trim

Sizes:

Deck - Keyhole, Bigdeck, Extra Big

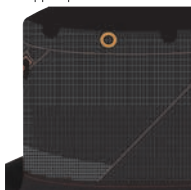
Waist - One Size

Product Code:

SD501-03



zipped pocket with mesh drain



25mm adjustable webbing knee release strap



4mm neoprene deck.

2.5ply Nylon Ripstop breathable and waterproof waist tube

Adjustable waist tube with shockcord and lock.

Zipped pocket with mesh drain.

25mm adjustable webbing knee release strap.

Removable adjustable 25mm elastic braces.

Super stretch tall neoprene waist tube.

Dive quality waterproof taping on all seams.

10mm Shockcord/bungee deck with excellent pre-stretch to grip cockpit.

40mm twisted webbing fail safe release strap.

Spraydecks



Ti Socks

2.0mm metalite glideskin neoprene liner socks designed to be worn inside shoes, fins and bindings.

Colourway:
Grey

Sizes:
S, M, L, XL, XXL

Product Code:
NE201-05

O-ring and finger loops



flatlock seams



2.0mm metalite glideskin neoprene insulation.
Jersey lined inner sole for wicking and internal grip.
O-ring cuff and finger loop make them easy to put on.
Smooth flatlock seams for comfort.
Quick drying.

46

NE201-05
Ti Socks



Xtreme Socks

3.0mm neoprene insulation socks with Kevlar reinforcement and grippy soles, designed to be worn inside your kayak.

Colourway:

Black

Sizes:

S, M, L, XL, XXL

Product Code:

NE211-15



super -stretch back panel

reinforced
kevlar heel and hardflex sole

3.0mm neoprene insulation.
Super-stretch neoprene back panel, easy to put on.
Kevlar reinforced toe and heel for durability.
Grippy, sticky puncture resistant Hardflex sole.
O-ring cuff and finger loop make them easy to put on.
Glued and blindstitched seams to minimise flushing.



47

Skull Cap

2.0mm metalite glideskin neoprene liner hat, designed to be worn for warmth, ear protection and under helmets.

Colourway:

Shadow Grey and Black

Sizes:

One Size

Product Code:

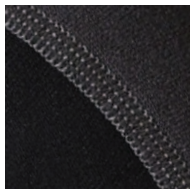
AK51

Head, Hands, Feet



adjustable chinstrap
with side-release buckle

smooth flatlock
seams for comfort



2.0mm metalite glideskin neoprene insulation.
Adjustable chinstrap with side-release buckle.
Smooth flatlock seams for comfort.
Covers ears.
Quick drying.



Insul8 Neo Gloves

3.0mm neoprene insulated gloves for warmth and grip. Great for any watersports including kayaking, surfing and stand-up paddling.



Colourway:

Black with red and white trim

Sizes:

S, M, L, XL, XXL

Product Code:

NE321-25



O-ring flexible cuff



Dura-shark palm for better grip



3.0mm insulating neoprene.

Dura-Shark palm for better grip.

Dura-mesh back for durability and quick drying.

Glued and blindstitched seams to minimise flushing.

O-ring flexible cuff with smooth edge for anti-flushing contact fit.

Pre-formed to anatomically fit your hand.

48

Amara Gloves

2.0mm neoprene gloves with tactile Amara palms for grip. Designed for kayaking, stand-up paddling, waterskiing and wakeboarding.



Colourway:

Grey and Yellow

Sizes:

S, M, L, XL, XXL

Product Code:

NE311-15



adjustable velcro wrist tab for secure fit



Amara fingers and palm for better grip



2.0mm Trispan (extra stretchy) back panels with Thermospun lining for insulation.

Amara fingers and palms for better grip.

O-ring cuff and finger loop make them easy to put on.

Adjustable velcro wrist tab for secure fit.

Xtreme Gloves



2.0mm neoprene gloves with Amara palms with Aramid Kevlar reinforcement. Designed for rope handling, river bank support and swift water rescue.

Colourway:
Grey and Black

Sizes:
S, M, L, XL, XXL

Product Code:
NE301-05



2.0mm Trispan (extra stretchy) back panels with Thermospan lining for insulation.
Amara fingers for better grip.
Aramid Kevlar reinforced palms for durability.
O-ring cuff and finger loop make them easy to put on.
Adjustable velcro wrist tab for secure fit.
Retro-reflective detailing for visibility.

aramid reinforced palms for durability



retro-reflective detailing for visibility



49

Paddle Mitts / Pogies

An essential accessory to keep the wind off and protect from the chill without losing bare-handed control on your paddle.



Colourway:
Red or Blue

Sizes:
Pair - One Size

Product Code:
AC200

elasticated snug fit around paddle shaft



drawcord one-hand adjustable cuff with pull tab/bite tab



Up-cycled 3ply waterproof breathable fabric.
Wide opening easy-on mitt.
Drawcord one-hand adjustable cuff with pull tab/bite tab.
Elasticated snug fit around paddle shaft with velcro closure and easy open tab.
Windproof.
Quick drying.
Made in the U.K.

Head, Hands, Feet

Throwlines

Used by Police, Fire and Rescue Agencies and recreational users across the U.K. The throw & re-pack characteristics along with the robust & reliable design ensure these are an industry favourite.

Colourway:
Red with hi-vis yellow

Sizes:
15m, 20m

Product Code:
AC042-43



10mm cored Polypropylene floating line (13kN)

50mm Belt mountable with two 25mm webbing loops



10mm cored Polypropylene floating line (13kN).
Accurate throw due to compact design.
Easy-pack collar handles for speedy re-pack with large funnel shaped opening.
Foam wall for flotation/buoyancy.
Failsafe dual release closure with Velcro and press stud.
Reinforced 500D Cordura® bag and base.
Enduro Mesh drain at neck.
50mm Belt mountable with two 25mm webbing loops.
Retro reflective piping for visibility.
Anti corrosive press studs and eyelets.
Popular with blue light rescue services and rescue agencies.
Made in the U.K.

50



AC049
Hornet Throwline

AC043
20m Throwline



51

Hornet

Upgraded for even better visibility with eye-catching contrast red features. A lightweight, compact but seriously strong 18m throwbag.

Colourway:

Hi-vis yellow with red

Sizes:

18m

Product Code:

AC049



8mm cored Polypropylene floating line (9kN).
Accurate throw due to compact design.
Easy-pack collar handles for speedy re-pack with large funnel shaped opening.
Foam wall for flotation/buoyancy.
Failsafe dual release closure with Velcro and press stud.
Reinforced 500D Cordura® bag base.
Hi-vis yellow main body.
Enduro Mesh drain at neck.
50mm Belt mountable with two 25mm webbing loops.
Retro reflective piping for visibility.
Anti corrosive press studs and eyelets.
Made in the U.K.



Easy-pack collar handles for speedy re-pack

reinforced 500D Cordura® bag base



Rescue



Floating Line

Polypropylene floating rope with excellent handling properties that offers an incredible strength rating.

Colourway:

Yellow

Sizes:

8mm - 9kN

10mm - 13kN

Product Code:

AC100-106

9kN = 9,000N

13kN = 13,000N

KN is the industry standard measurement of force for rope strength, but you may be more familiar with the idea of a weight in kg hanging from the rope, in standard Earth gravity - the Newton to Kilogram conversion factor is 9.80665, so dividing 13,000N by this gives 1325kg.

Polypropylene floating line/rope with strong core.

16 plait.

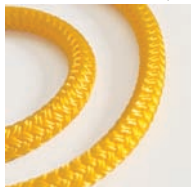
Available in 8mm or 10mm diameter.

Made in E.U.

8mm 16 plait



10mm 16 plait



52



3m Waist Towline

A light weight, compact adjustable towline designed for every day use for professional instructors or recreational users.

Colourway:

Black and yellow

Sizes:

One Size - 3.0 metres

Product Code:

AC020

Strong 50mm webbing adjustable belt with Fixlock® quick release buckle.

Bright yellow toggle to aid quick release with cold fingers.

Lined Cordura® 500D Nylon bag with easy access velcro.

Mesh draining panels.

3m of hi-vis yellow durable 25mm webbing.

Easy adjusted tow length.

Integral shock absorbing system.

High quality anti-corrosive alloy mini carabiner.

D-ring attachment point.

Retro reflective panels on waist strap.

Fully bar-tacked for extra strength



high quality anti-corrosive
alloy mini carabiner

integral shock
absorbing system

53

Fox40 Micro Marine Pealess Whistle

Compact, ergonomic pealess whistle with mighty sound.

Colourway:

Orange

Sizes:

One Size - 53x25mm

Product Code:

AK40



elasticated snug fit
around paddle shaft



Relied upon by NATO Forces, U.S Army & the Canadian Coast Guard .

Ergonomic design, no pressure points.

Compact and easy to store.

Easily attach it to life jackets, buoyancy aids, back packs or clothing.

Works when wet or dry.

Very loud.



extra long Velcro
and webbing for adjustability



54

Foot Mat

To protect your gear (and feet) when changing, or for kneeling on when in your canoe.



Colourway:

Black with cyan and white

Sizes:

One Size - 56cm x 44cm

Product Code:

AK47

Roofbar Pads

Super thick foam padded roofbar pads that fit all roof racks.

Colourway:

Black with white trim

Sizes:

45cm, 80cm

Product Code:

AC018-50

Heavy duty 600D Nylon outer shell for durability.

Foam wraps round 360° for protection even if they spin.

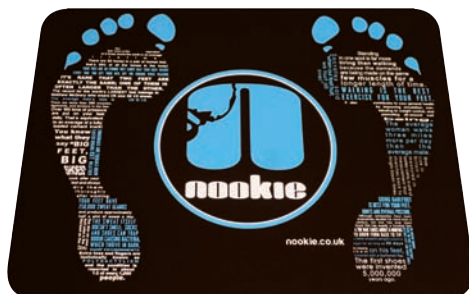
Extra long Velcro and webbing for maximum adjustability.

Fits all roof racks, even the really fat ones.

Fits Aero Bars.

Designed to carry boats, kayaks, stand-up paddle boards or anything else that needs protection on your roofrack.

Sold as a pair.



8mm Thick neoprene.

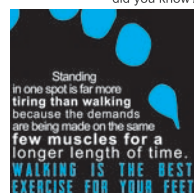
Protects your gear... stand on this, not your gear when changing.

Protects your feet from cold car parks / river banks / sharp things.

Really does make your life better.

Gives you great trivia/knowledge.

did you know?



Dry Bag

Durable waterproof dry bags with adjustable rucksack straps, carry handle, two-way closure and mesh slimline zipped front pocket.

Colourway:

60L - Grey with yellow trim

80L - Grey with red trim

Sizes:

60L, 80L

Product Code:

AC061-62

new



Heavy duty durable PVC with matt finish.
High frequency welded waterproof seams.
Two-way closure system with velcro seal.
Roll top down at least three times, then either snap buckles together at top, or use adjustable buckles on the side of the bag.
D-rings for extra security when closed (use carabiner or padlock).
Adjustable, padded rucksack straps.
Grippy rubber carry handle.
Zipped splash pocket on front.

adjustable,
padded rucksack straps



grippy
rubber carry handle



55

Smiley Nose Clip

These stylish nose grips/plugs are small and inconspicuous. Smileys provide the most comfortable and secure fit available.

Colourway:

Various colours

Sizes:

One Size

Product Code:

SM001



squidgy rubber nose
grips with flexible wire arch



Squidgy rubber nose grips.
Adjust fit with flexible wire arch.
Retainer cord fits via a loop to your helmet strap or other suitable location point.
Developed by World Freestyle Kayak Champion, Eric Southwick "Wick".
Made in the USA.



T-Shirts

An absolute staple favourite in the nookie range. A high quality, stylish, soft, comfortable T-shirt for everyday wear

Colourway:

Variety of designs available, visit the website for details

Sizes:

S, M, L, XL, XXL

Product Code:

SW501-05

Standard cut high quality T-shirt.

Ultra-soft 100% combed cotton.

Great fitting iconic nookie T-shirt.

Hoodies

NEW lightweight (280g) climate neutral organic hoody with inconspicuous pouch pocket.

Colourway:

Variety of designs available, visit the website for details

Sizes:

S, M, L, XL, XXL

Product Code:

SW901-05



Lightweight hoody with nookie design in vinyl print.

Three panel double fabric hood.

Drawcords and seamless kangaroo pouch.

100% Certified Organic Cotton Brushed.



Classic heavyweight (330g) hoody with pouch pocket and thumb holes.

Colourway:

Variety of designs available, visit the website for details

Sizes:

S, M, L, XL, XXL

Product Code:

SW801-05

Heavyweight hoody with nookie design in vinyl print

Three panel double fabric hood

Drawcords and kangaroo pouch

MP3/Smartphone pouch and hidden earphone loops

Unisex fit

Fabric: 80% Cotton, 20% Polyester



Womens T-Shirts

Beautifully soft, low scoop neck organic bamboo womens specific T-shirt.

Colourway:

Variety of designs available, visit the website for details

Sizes:

S, M, L, XL

Product Code:

SW551-55



Raglan sleeves.

Scoop neck.

70% Bamboo Viscose 30% Organic Cotton Fine Jersey.

Womens Hoodies

NEW lightweight (280g) climate neutral organic hoody with inconspicuous pouch pocket.

Colourway:

Variety of designs available, visit the website for details

Sizes:

S, M, L, XL, XXL

Product Code:

SW901-05



57



Lightweight hoody with nookie design in vinyl print.

Three panel double fabric hood.

Drawcords and seamless kangaroo pouch.

100% Certified Organic Cotton Brushed.





© helen stewart

NKE Centre Range

A phenomenal range of gear for beginners and outdoor centres, focussing on ease of use and durability, with an exceptional reputation.



ask about our customised
printing service for your
company



NKE Centre Buoyancy Aid

Colour coded by size, this high spec commercial buoyancy aid/pfd is designed for outdoor activity providers. Made with tough Cordura® 500D, this buoyancy aid is built to last.

Colourway:

Yellow Red Blue Green

Sizes:

Junior SM LXL XXL

Product Code:

BA010 BA011 BA012 BA013

Hard-wearing Cordura® 500D shell & smooth nylon lining.
Whole buoyancy aid colour coded to indicate size.
Easy access front zip with grip system.
'Contact fit' waist system.
5 points of shoulder & waist adjustment.
40mm waist belt for secure fit with no ride up.
Bar-tacked reinforced shell for durability.
High visibility retro-reflective piping.
Optional crotch straps (provided with Junior size).
CE ISO 12402 Certification.



59

NKE Reinforced

Extremely adjustable recreational Nylon spraydeck to fit all paddlers and kayaks in calm waters. Suitable for centre/commercial use. Reinforced with 500D Cordura for durability.

Colourway:

Black with colour coded release strap

Sizes:

Deck - Keyhole, Bigdeck, Extra Big
Waist - One Size

Product Code:

SD040-44



Colour coded 25mm webbing release strap to indicate size



Adjustable cockpit size with shockcord and cord wheel



Flexible, durable, waterproof Nylon spraydeck.
Tough 500D Cordura reinforced deck panels.
Adjustable one size waist with shockcord and lock.
Adjustable cockpit with shockcord and cord wheel.
Dive quality waterproof taping on all seams.
25mm webbing fail safe release strap, colour coded to indicate deck size.
Excellent for personal use, or every day commercial outdoor activity centre use.



NIKE Centre Range

A phenomenal range of gear for beginners and outdoor centres, focussing on ease of use and durability, with an exceptional reputation.



© st. george's house

Paddle

An economical aluminium paddle with a reinforced ABS plastic blade.

Colourway:
Red

Sizes:
150 cm

Product Code:
PD001

new

Strong aluminium shaft.
Plastic blade and T-grip.
Suitable for commercial use.
Durable and hard wearing.



NKE Jacket

Durable, waterproof and breathable ripstop nylon smock style jacket. Centre tried and tested over the years, the super durable jacket for commercial use.

2ply Nylon Ripstop waterproof breathable fabric.
Waterproofness: 5,000mm/H2O.
Breathability: 3,000g/m2/24hrs.
Tough, durable, flexible for heavy duty use.
Adjustable rubber-lined waist with shockcord and cordlock.
Adjustable neoprene neck with velcro closure.
Front opening for venting and air flow.
Drying/hanging loop on external collar.
Neoprene cuffs.
Whole garment colour coded to indicate size.
Dive quality waterproof taping on all seams.



Colourway:

Red/Yellow Yellow Orange Red Blue Green Grey

Sizes:

XXS/Junior XS/Youth S M L XL XXL

Product Code:

JA073 JA074 JA075 JA076 JA077 JA078 JA079

Bumper Helmet

A solid shell with full internal foam padding and an adjustable, replaceable cradle.

Colourway:

Red, Yellow, Blue and White.

Sizes:

Junior - Circumference 50-56cm
Adult - Circumference 50-60cm

Product Code:

HE001-05



Closed cell foam padding throughout the whole inside.
Replaceable cradle with strong pinch slider.
Rigid, yet quick to adjust in width and depth.
Easy to fit.
Robust high density polyethylene shell with internal EVA.

River Tamar, Cornwall.
(Just round the corner from our factory.)





river
sea
surf

Waterproof and Breathable Fabrics

4ply EvoTX4

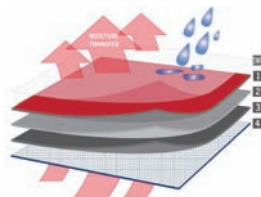
Designed specifically for the new Nookie drywear range, EvoTX4 from Nookie has been developed and tested with the sole focus on performance. Proven to be tough for professional and expedition use, with quick drying properties and a flexible feel that is comfortable wear.

1. Durable 160D Nylon face fabric that is flexible and soft to the touch.
Coated with Durable Water Repellent (DWR)
2. Hydrophobic, microporous coating
3. Hydrophillic grey coating (grey is more durable than standard white)
4. Nylon 20D Tricot Mesh for wicking

Waterproofness: 20,000mm/H₂O

Breathability: 5,000g/m²/24hrs

Products: NEW 2014 Charger Drysuit, Evolution Dry Trousers, Pro Bib Dry Trousers, Pro Bib Dry Trousers (WW Edition), Atlantic Touring Deck



4ply EvoTX 500D Reinforced

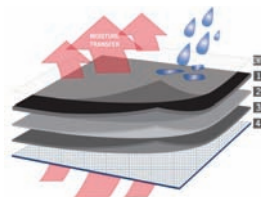
Designed to compliment EvoTX4, EvoTX 500D is even tougher. The 500D Nylon construction is like Cordura but with the added benefit it is waterproof and breathable. The dense weave protects all high wear areas, such as the seat, knees and cuffs in a garment, without extra bulk.

1. Durable 500D Nylon face fabric that is as tough as Cordura.
Coated with Durable Water Repellent (DWR)
2. Hydrophobic, microporous coating
3. Hydrophillic grey coating (grey is more durable than standard white)
4. Nylon 20D Tricot Mesh for wicking

Waterproofness: 20,000mm/H₂O

Breathability: 3,000g/m²/24hrs

Products: NEW 2014 Charger Drysuit, Evolution Dry Trousers, Pro Bib Dry Trousers, Pro Bib Dry Trousers (Whitewater Edition)



4ply Bamboo Herringbone

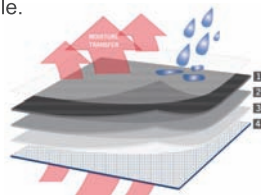
The soft handle of the Nookie bamboo mix herringbone belies its incredible abrasion resistance. Whether wet, dry, frozen or submerged this fabric will deliver.

1. Durable, flexible, comfortable herringbone weave outer fabric with DWR (durable water repellent) coating.
2. Hydrophilic, microporous coating waterproof and exceptionally breathable.
3. Hydrophilic membrane, waterproof and breathable.
4. Nylon N18D tricot for wicking.

Waterproofness: 20,000mm/H₂O

Breathability: 15,000g/m²/24hrs

Products: Rapid Semi-Dry Trousers



Waterproof and Breathable Fabrics



3ply Xtetra Ripstop

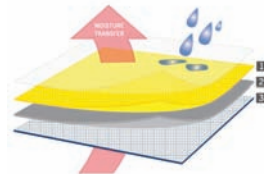
This comfortable, mid-weight fabric is quick drying and incredibly good at resisting the rigours of kayaking.

1. Mid-weight polyester ripstop outer fabric with DWR (durable water repellent) coating.
2. Hydrophobic, microporous coating waterproof and breathable.
3. Nylon N6.6D tricot for wicking.

Waterproofness: 15,000mm/H2O

Breathability: 5,000g/m2/24hrs

Products: Venom, Airscrew, Storm



2.5ply Ripstop

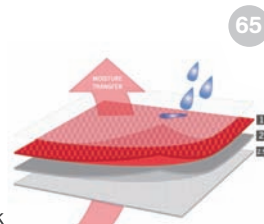
Durable, yet flexible mid-weight fabric is the same as our 2ply outer fabric, with an extra 0.5 layer to improve wicking and comfort.

1. Nylon Ripstop outer fabric with WR (water repellent) coating.
2. Hydrophobic, microporous coating waterproof and breathable.
- 2.5. Matrix dry touch print for wicking.

Waterproofness: 10,000mm/H2O

Breathability: 5,000g/m2/24hrs

Products: Pathfinder, Shadow, Nimbus Over Trouser, Como Touring Deck



2ply Ripstop

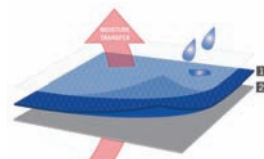
This ripstop fabric has been a staple in our NKE range for many years and has proven it's pedigree as tough, durable yet flexible fabric for heavy duty use.

1. Nylon Ripstop outer fabric with WR (water repellent) coating.
2. Hydrophobic, microporous coating waterproof and breathable.

Waterproofness: 5,000mm/H2O

Breathability: 3,000g/m2/24hrs

Products: NKE Centre Jacket



Other Fabrics

Enduro Mesh

Designed originally for motorbike wear, this exceptional fabric offers great abrasion resistance, breathability, and drainage. Furthermore, its soft handling flexibility belies its toughness. This means that stress is not concentrated along the edges of panels, something that causes a lot of wear and tear on waterproof fabrics reinforced with other materials.

Products: Rapid Semi-Dry Trousers, Venom, Airscrew, Throwlines, Hornet

Cordura®

Also originally designed for motorbike wear, this special type of hi-tensile nylon is incredibly abrasion and tear resistant. We have used it for decades as the outer fabric for our buoyancy aids because of its proven track record for durability in and out of the water. We're so impressed by it, there isn't a buoyancy aid in this years range that doesn't use it.

Products: Rivermonster, Explorer, Ranger, Traveller, NKE Buoyancy Aid, Throwlines, Hornet

Softcore Thermal Technology

This infamous fabric in the Nookie range is used in our base layer thermals. It boasts UPF 30 sun protection in a four way stretch fabric for fantastic fit. The fluffy brushed inner side offers warmth, wind protection, wicking properties and climate control in the softest most comfortable fitting thermal you will ever buy. And not to forget, it is machine washable and exceptionally quick drying.

Products: Thermal Base Softcore, Iceman, Shadow Jacket

Polartec® Classic 100 Recycled

Polartec® Classic fabrics are the reference standard for lightweight, warmth & breathability. This is the original fleece offering unparalleled durability & quality. Polartec® Classic fabrics have been the primary insulation layer of choice among experienced outdoor enthusiasts for nearly three decades. Polartec® Classic 100 weight fabrics are excellent for a warm first layer or lightweight sweater. Ideal for wear under a drysuit or shell garments. This Polartec® Classic 100 fleece not only provides warmth without weight but is breathable & durable, dries quickly and is a great styling option for virtually every end use. This fabric contains at least 50% recycled content, saving natural resources and energy while reducing CO² emissions.

How does it work? - The 100% Polyester velour construction creates air pockets that trap air and retain body heat. Unlike other fleece fabrics, Polartec® Classic 100 maintain their insulating ability and non-pilling appearance after repeated laundering.

Products: Iceman, Thermalcore100

Warranty / Guarantee Information

Nookie offer a one year guarantee on all their products against faulty workmanship and materials. This guarantee is valid to the original retail consumer purchaser only and a proof of purchase will be required.

If a product is found to be defective due to a manufacturing failure Nookie will repair or replace, at their discretion, any defective part.

To receive a free EXTENDED ADDITIONAL YEAR'S WARRANTY on workmanship you must register your purchase within 6 months of the original date of receipt using the online form. Warranties are valid provided the product was purchased as first quality originally.

The product must be sent directly to Nookie (carriage paid by you) together with the completed RETURNS FORM.

This guarantee does not cover normal wear & tear, nor damage resulting from abuse, alteration or unauthorised repair. Latex seals and fabric socks are not covered under this guarantee due to their vulnerable nature. Clothing must be clean and dry before being sent back for warranty or repair work. Wet, dirty or stinking products will not be repaired and returned to the sender. Please allow up to 21 days for items to be returned.

This guarantee does not affect your statutory rights.

Postage is not free - it is your responsibility to pay for the cost of shipping the product to Nookie.

THE CUSTOMER WILL NEED TO KEEP THEIR ORIGINAL RECEIPT AS
PROOF OF PURCHASE TO VALIDATE THE WARRANTY.

67

Repairs

Nookie can repair rips, splits and taping problems or replace latex, socks and zips on any Nookie, Delta or NKE product. In fact nearly anything is possible. Prices will be given upon inspection.

Return Address

Nookie Returns Department
Unit 1 Delaware Industrial Estate
Delaware Road
Gunnislake
Cornwall
PL18 9AR
United Kingdom

Tel: +44 (0) 1822 832 333
Fax: +44 (0) 1822 832 123

Product Care

Drysuits, Jackets and Trousers

Your dry-wear has been constructed with waterproof fabric, waterproof zips, sealed seams and latex dry seals in order to exclude water entry to the garment. However, you must be aware that various factors can cause water ingress at any time and you should be appropriately dressed and prepared for this eventuality. Always wear a good quality thermal base-layer and socks under your suit, and other watersports-specific thermal layers if appropriate.

Rinse and Dry

- Always rinse your waterproof garments in clean, fresh water after every use. Your perspiration contains bacteria, so does dirty water, these will multiply and eat your equipment if allowed to thrive.
- Air dry your waterproof garments away from sunlight and direct heat sources (do not leave on a radiator or in an airing cupboard). Extreme temperatures will damage the clever waterproof and breathable membrane and can cause delamination. Machine washing, sun drying, cars in hot weather are all big no-no's.
- DO NOT leave your waterproof garments damp or wet for long periods of time. This can cause mildew and mould and ultimately will delaminate the fabric and cause it to fail.

Storing

- Store in a cool, dry place away from sunlight, oil-based substances and chemicals.
- DO NOT leave your waterproof garments screwed up in a dry bag. Loosely fold or hang your waterproof garments and avoid unnecessary compression.

68

Avoid

- Avoid contaminating your waterproof garments with oil-based substances, sunscreen and insect repellent. Oils, chemicals and fuels will damage the technical fabric.
- Make sure your waterproof garments are cleared of abrasive dirt or dried salt before each use. If salt water dries it leaves super abrasive crystals which will destroy your product from the inside next time you use it.
- UV is very bad, using a product in the sun is one thing, leaving it in the sun is quite another. Keep in the shade when not in use, and never expose the lining material or latex seals to excessive direct sunlight.

Drysuit

After putting on the suit, ensure that the zips are fully closed and sealed. Vent trapped air out from the neck and be ready to do so again if conditions change. Swimming in a drysuit can be extremely dangerous. Make sure you understand about air venting, and always wear a buoyancy aid, before going near the water. It is the nature of the paddlesports for which the drysuit is designed that your suit may incur significant wear and tear. Whether the fabric wears through from the outside or the inside this can be repaired with glue and a patch of any nylon waterproof fabric. The suit has been tested at the factory to ensure that it is supplied leak free. If the suit begins to leak at one of the seams due to flexion induced tape lift, or on the fabric itself due to puncture or wear, you can easily repair this using the glue. Use only a thin layer of glue - a thick blob will cause a stress concentration and subsequent extreme wear of the surrounding area.

When transporting the suit make sure that you keep the zips straight. Roll the drysuit up from feet to chest and gently wrap the shoulders (with the zip) around the bulk of the suit to avoid creasing or putting the zip under unnecessary stress.

Product Care

Latex Seals

Cut down the latex neck seal with a sharp knife or scissors to provide a comfortable fit. Instructions for doing this can be viewed at www.nookie.co.uk Please note that a latex seal does not have to be super tight in order to remain dry. Put on the garment carefully using a free hand to help open the latex seals and work them over your head/hands. Do not drag the seals over your skin while holding the fabric as this places undue strain on the construction and will cause leakage. It is advisable to condition your latex with Seal Saver (available in our online store; www.nookie.co.uk) to encourage durability and longevity of the seals. In common with all other manufacturers we are not able to offer a guarantee on our latex seals, but in the unlikely event that you break one, we can replace it for a nominal charge - full details at www.nookie.co.uk

Plastic Zips - TIZIP MasterSeal®

The TIZIP MasterSeal® is easy to operate, and pressure tested to 500 mbar. Heavy or sharp bending or twisting may cause leakage or permanent damage. Please try to avoid. It is highly resistant to damage caused by dirt or sand. However if dirt or sand are present, the zipper should be cleaned with fresh water. Dirt particles can affect the sealing function if they get caught between the chain profiles. The cleanliness of the chain area should be thoroughly checked prior to every use. It is also provided with a tube of lubricant, please use regularly to maintain the zip. TIZIP Masterseal® zippers need to be lubricated on the docking end from time to time. Carefully apply the lubricant over the docking end surfaces on front and back and inside where they connect to the zipper chain. Repeat before long term storage, leaving the slider closed when dry. Warning: excessive lubricant may stain fabrics.

69

Brass Zips - BDM

The brass BDM zips on the original Assassin drysuit, like any super technical item need to be properly looked after. Zippers should be rinsed in clean fresh water after every use. The zipper should, periodically, also be cleaned and lubricated with Zip Oil or Zip Wax to ensure easy operation of the slider. The precise timing of this cleaning depends on the rate of usage of the zipper. However, note that whenever the slider resistance feels higher than usual, clean and lubricate the elements. Leave zip open for long term storage.

Very Important

DO NOT CREASE OR FOLD THE ZIPS AT ANY TIME - FORCING THE ZIPS TO BEND CAN BREAK THEM AND ARE VERY EXPENSIVE TO REPLACE. ZIPS BROKEN BY FOLDING OR USE OF EXCESSIVE FORCE ARE NOT COVERED BY OUR MANUFACTURERS WARRANTY.

Throwlines / Polypropylene Rope

Polypropylene line has a relatively low melting point. Care should be observed if used in conjunction with friction devices. To avoid abrasion damage to the line, always rinse and clean after use and avoid standing on the line at any time. Any grit that is pressed in to the line will cause abrasion damage to the centre of the line when it is put under load. Always rinse the throwline after use with fresh water and dry. This will stop corrosion to the press-studs and also salt crystals building up and causing abrasion. Drying is important to avoid mildew. Do not dry in direct sunlight. Inspect the line by running it through your hands to feel any inconsistencies and visually check for signs of damage. Always dry and store the product out of direct sunlight because ultra violet light will damage the line. Store the line coiled and out of the bag, then whoever uses it next will know it has been packed correctly. Avoid contact with petroleum products; the line can be damaged from the inside.



Garment Size Chart



1. Chest

Measure the chest around the fullest part, placing the tape close under the arms making sure the tape is well up at the back over the shoulder blades.

2. Waist

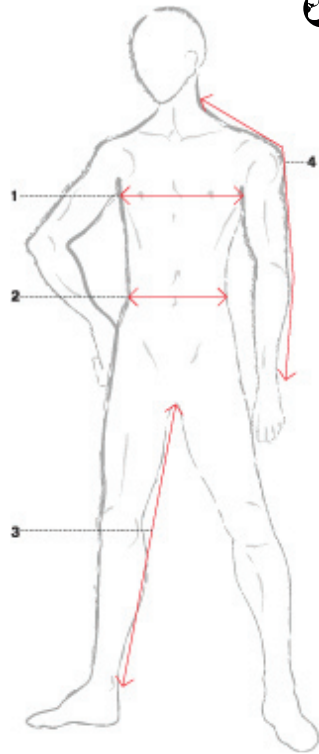
Measure around the natural waistline, at the point your waistband or belt usually fits (unless you wear your trousers round your bum, then you'll just have to bend to the side and see where you crease, that's your waist).

3. Inside Leg

Measure from the top of the inside leg at the crotch to where the trouser hem is to sit on the shoe/bottom of the ankle, alternatively you can measure a trouser that fits you well.

4. Arm

This is taken from the neck point (the collar seam on the shoulder line) along the shoulder and down the outer sleeve to the wrist.



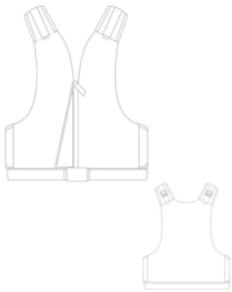
71

Size	Chest (Maximum)	Waist (Maximum)	Inside Leg (Maximum)	Arm (Maximum)	Height	Ladies
Junior (XXS)	> 30" > 76cm	> 22" > 56cm	> 27" > 68cm	> 27" > 68cm		N/A
Youth (XS)	> 34" > 87cm	> 28" > 71cm	> 29" > 74cm	> 29" > 74cm		N/A
Small (S)	> 38" > 97cm	> 31" > 79cm	> 32" > 81cm	> 32" > 81cm	5' 4" - 5' 10" 162 - 178cm	10/12
Medium (M)	> 40" > 102cm	> 34" > 87cm	> 33" > 84cm	> 33" > 84cm	5' 5" - 6' 0"	12/14
Large (L)	> 44" > 112cm	> 38" > 97cm	> 34" > 86cm	> 34" > 86cm	5' 6" - 6' 2"	14/16
Extra Large (XL)	> 48" > 122cm	> 40" > 102cm	> 35" > 89cm	> 35" > 89cm	5' 7" - 6' 4"	16/18
Extra-Extra Large (XXL)	> 52" > 132cm	> 42" > 107cm	> 35" > 89cm	> 35" > 89cm	5' 7" - 6' 4"	18/20

Buoyancy Aid / PFD Size Chart

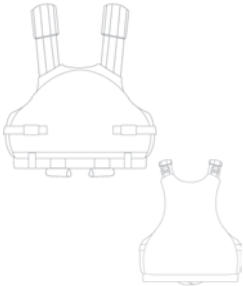
50N Jacket (EN393 and ISO 12402)

Size	Chest	Waist	Weight	Newtons
Junior (XXS)	23.5" - 33" 60 - 84cm	19" - 27" 50 - 70cm	66 - 110 lb 30 - 50kg	40N <
Small/Medium (SM)	33" - 42" 84 - 107cm	24" - 40" 60 - 101cm	88 - 154 lb 40 - 70kg	45N <
Large/Extra Large (LXL)	42" - 47" 107 - 120cm	32" - 47" 81 - 120cm	154 lb + 70kg +	50N <
Extra Extra Large (XXL)	47" - 50" 120 - 127cm	43" - 52" 110 - 132cm	154 lb + 70kg +	50N <



70N Vest

Size	Chest	Waist	Weight	Newtons
Small/Medium (SM)	33" - 42" 84 - 107cm	24" - 40" 60 - 101cm	121 - 165 lb 55 - 75 kg	70N
Large/Extra Large (LXL)	42" - 50" 107 - 127cm	32" - 50" 81 - 127cm	165 - 253 lb 75 - 115kg	70N



Glove Size Chart

Size	Traditional Glove Size	Circumference	Finger Tip to Palm
Small (S)	6.5 - 7	16.5 - 18cm	16 -17cm
Medium (M)	7.5 - 8	18 - 20.5cm	17-18cm
Large (L)	8.5 - 9	20.5 - 23cm	18 - 20cm
Extra Large (XL)	9.5 - 10	23 - 25cm	20 - 21cm
Extra Extra Large (XXL)	10.5 - 11	25 - 28cm	21 - 23cm

Sock Size Chart

Size	UK	EUR	US
Small (S)	3 - 4	35 - 37	4 - 5
Medium (M)	4 - 7	37 - 40	5 - 8
Large (L)	7 - 9	40 - 43	8 - 10
Extra Large (XL)	9 - 12	43 - 47	10 - 13
Extra Extra Large (XXL)	12 +	47 +	13 +

1. Circumference

Measure around your hand at the widest part of your palm.

2. Finger Tip to Palm

Measure from the tip of your longest finger to the base of your palm at the wrist.

Spraydeck Size Chart



Waist

Measure around the natural waistline, at the point your waistband or belt usually fits (unless you wear your trousers round your bum, then you'll just have to bend to the side and see where you crease, that's your waist).

Neoprene Waist Size Chart

Size	Waist
Extra Small (XS)	26 - 30" 66 - 76cm
Small/Medium (SM)	28 - 34" 71 - 86cm
Large/Extra Large (LXL)	32 - 40" 81 - 102 cm

Fabric Waist Size Chart

Size	Waist
One Size	> 42" > 107cm
Small/Medium (SM)	> 34" > 87cm
Large/Extra Extra Large (LXXL)	> 42" > 107cm

Deck

Measure all the way round under the cockpit rim using a tape measure or piece of string. Compare the circumference measurement to the chart below. Some spraydecks come in two or three waist sizes, there is some overlap in these sizes, it depends how tight a fit you prefer

Neoprene Deck Size Chart

Size	Circumference	Length
Ocean	155 - 180cm	55 - 65cm
Small	180 - 205cm	65 - 75cm
Keyhole	195 - 225cm	75 - 85cm
Big	205 - 235cm	85 - 95cm
Extra Big	225 - 250cm	95 - 110cm

Fabric Deck Size Chart

Size	Circumference	Length
Keyhole	150 - 210cm	60 - 85cm
Big	205 - 230cm	85 - 95cm
Extra Big	225 - 260cm	95 - 110cm

1. Put your deck on.

Put the shockcord/bungee under the cockpit rim at the back and ease the edges round. Stretch the front of the deck over the cockpit and make sure the release strap is accessible.



2. Pull your deck off.

Find the release handle and pull forwards (to the front of the boat) and up from the cockpit rim.







river. sea. surf.



Unit 1 Delaware Industrial Estate
Delaware Road
Gunnislake
Cornwall
PL18 9AR
United Kingdom

Tel: +44 (0) 1822 832 333
Fax: +44 (0) 1822 832 123

Email: info@nookie.co.uk
www.nookie.co.uk



nookie.co.uk



For more information
on the products in our
range please visit

www.nookie.co.uk
or call our office on

+44 (0) 1822 832 333