

COMPONENT WORKBOOK

Nº18



KAJAK SPORT COMPONENTS





FROM KAYAKERS TO KAYAKERS

**KAJAK SPORT OY WAS ESTABLISHED IN 1989 BY FOUR
INSPIRATIONAL KAYAKERS AND EXPLORERS
FROM FINLAND. WE STARTED WITH SEA KAYAKS WHICH
QUICKLY BECAME AWARDED AROUND THE WORLD.**



But soon we noticed that there was a very limited selection of true sea kayak components available for manufacturers back then. So we started to create components primarily for our own needs. Soon after we had created a basic component set for a sea kayak and we became one of the very first sea kayak component producer for other kayak manufacturers too. Since then these small, detailed parts have captured more and more space in our heart and interest. With tens of thousands of lakes and long coastline, Finland is one of the Europe's richest areas in natural waterways. Access to this fantastic water system has, and continues to provide us with a wide variety of conditions in which to develop and refine our products.

Today our components are highly regarded worldwide for their unmatched quality and performance. We have become a leading supplier to virtually every major kayak manufacturer in the world. We still

strive to retain this leadership role through continuous investment in product design, research, development and by remaining innovative at all times. Own and original ideas can be seen in both the patents awarded to the company and in the highly rated reviews in many international publications.

We would also like to thank all our partners and customers for their fruitful co-operation in our history. It has been the key factor for successful and reliable product selection. All of them have slightly different aspects of the use or need of a component. By combining those together we can find solutions that serve one the most. Functional and respected components have a significant role in achieving a successful kayak. No matter if it's a kayak for a beginner or for an experienced sea kayaker it needs to work on the environment where it's used.

So choose Kajak-Sport quality, it's beyond compare.



KAJAK SPORT R&D

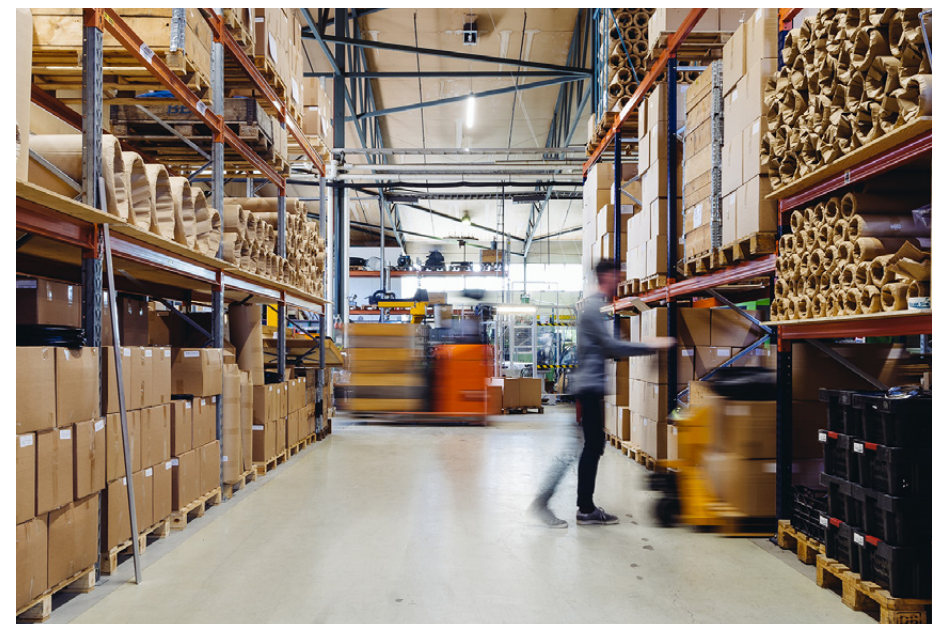
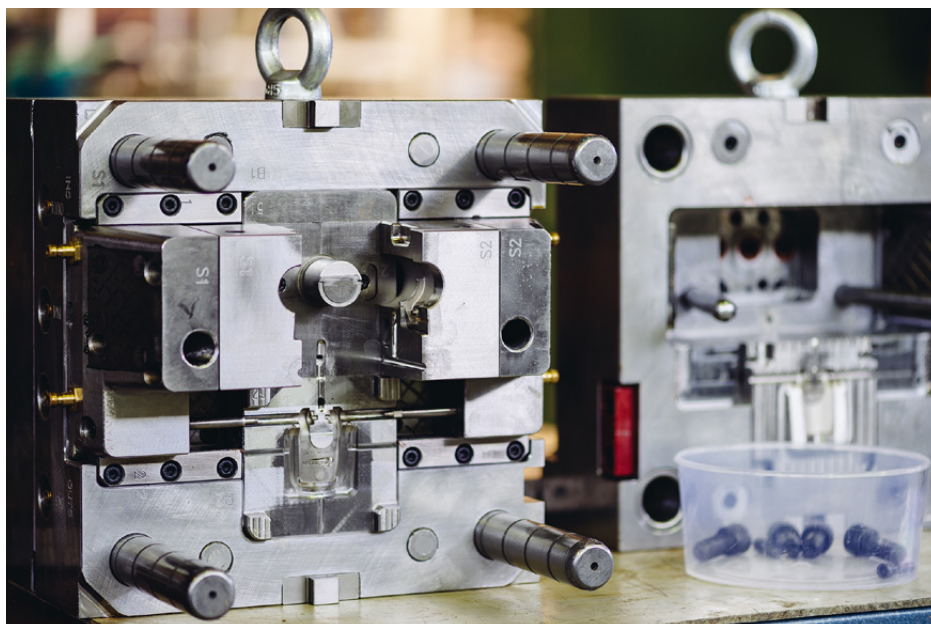
In this rapidly changing world we all are continuously developing things around our lives. Everyday life has changed a lot in past 30 years and many of the improvements has made our lives easier by allowing things that were not possible or was hard to reach back then. This same applies to the products been used for kayaking even though the boat itself has been invented quite a long time ago.

One of the main points in kayaking or any other outdoor activity is the simplicity and difference of the life in outdoors compared to the modern lifestyle we have used to. Travelling, cooking and accommodation are all slightly different when it's done somewhere in a remote area out of everyday luxuries.

Product that has been designed for this kind of use has also changed. Back in old days most of kayak components was made out of metal. Those parts were generally quite clumsy and heavy. Nowadays all respected kayak manufacturers are trying to reach the best possible level and balance of functionality, weight, durability, serviceability and cost of the product, depending if the kayak is used in casual day touring, demanding expeditions or rough sea conditions.

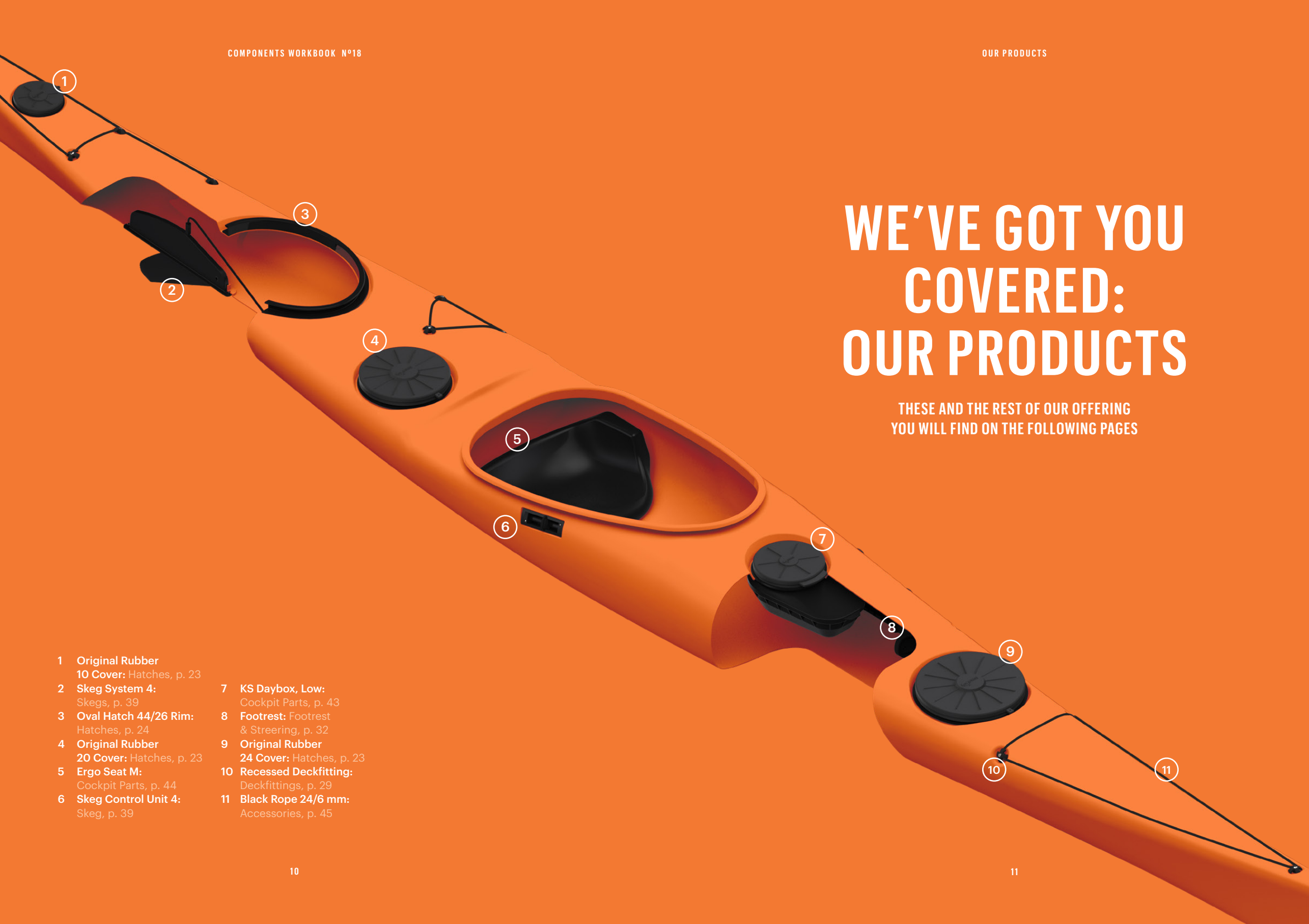
We at Kajak Sport Components are specialized to develop serious high end components and equipment for these continuously developing brands that build world class boats for people that paddles

all over the world in various conditions enjoying the life at outdoors. Our design and production is made in-house in our own factory. We use modern 3D design software together with latest 3D printing system to evaluate and test our designs. We have modern fleet of injection moulding machines equipped with robots to form fully automatized production lines that match today's sustainable development requirements. Most of our components are made of technical blended plastics to have highest stiffness, weight and durability level. This environment offers cost effective platform for specialized high quality kayak parts that withstand time and usage.



WE'VE GOT YOU COVERED: OUR PRODUCTS

THESE AND THE REST OF OUR OFFERING
YOU WILL FIND ON THE FOLLOWING PAGES

- 
- 1 Original Rubber
10 Cover: Hatches, p. 23
 - 2 Skeg System 4:
Skegs, p. 39
 - 3 Oval Hatch 44/26 Rim:
Hatches, p. 24
 - 4 Original Rubber
20 Cover: Hatches, p. 23
 - 5 Ergo Seat M:
Cockpit Parts, p. 44
 - 6 Skeg Control Unit 4:
Skeg, p. 39
 - 7 KS Daybox, Low:
Cockpit Parts, p. 43
 - 8 Footrest: Footrest
& Steering, p. 32
 - 9 Original Rubber
24 Cover: Hatches, p. 23
 - 10 Recessed Deckfitting:
Deckfittings, p. 29
 - 11 Black Rope 24/6 mm:
Accessories, p. 45

PADDLES & PADDLE ACCESSORIES



"I particularly like the diamond shape of the Inuksuk blade as well as the oval loom. It works great for precise strokes and sculling"

— Dubside

KS INUKSUK

Inuksuk is our flag ship in paddles. Hand-crafted West Greenland style paddle made in Finland. Solid, strong yet light full carbon core paddle with stunning matt finish. Well balanced construction with buoyant blade and oval loom creates light and effortless feel. Smooth and well rounded thin edges allows quiet catch and confident stroke. Inuksuk is equipped with unique Kajak Sport oval shaft ferrule to allow easy split and length adjustment.

The historical story and the unique feeling of our new West Greenland paddle takes you far from the traditional paddling routines that you are used to. Therefore we gave it a name Inuksuk. It shows that you are on the right path to new adventures.

Sharp yet smoothly rounded blades goes in to the water precisely and quiet. Blade has good grip in to the water and there is no vibration at all. Real oval loom with smooth shoulders and matt finish offers perfect grip. Kajak Sport unique construction allows tough fibres follow around all the corners and edges of the blade. This seamless and trouble free construction makes Inuksuk the strongest greenland paddle on the market. Our construction does not require any additional protect parts against the usage, it will last!

Product code	201740
Weight	800 g
Lenght	215-228 cm, fully adjustable
Width	95 mm
Material	Carbon



"The Inuksuk is by far the best paddle I have in my quiver. Having an adjustable loom makes this paddle very diverse allowing you to change it's length quickly to adjust to conditions and different kayak widths. It's sharp blades are key for seamless paddle stroke transitions and is very reactive yet quite at the same time. I find I have more catch with the Inuksuk paddle which gives me that extra confidence in bigger conditions. I have put this paddle through the test and it is impressively strong."

— James Manke, Canada

Inuksuk, side

Inuksuk, front



KS SEA PERFORMANCE, carbon

Kajak Sport Sea Performance paddle is exceptionally light and buoyant touring paddle with unique full core construction. Smooth design gives quiet entrance and exit from water.

Sea Performance is a great choice for those who prefers effortless and conservative low-angle style strokes with sweet details.

Superior dull surface finish with nicely rounded corners with unique oval grip ensures excellent ergonomic of all times.

Tough carbon core split construction made with Kajak Sport award-winning Shaft Ferrule System offers free angle and length adjustment between 215–225 cm.

Sea Performance is Handcrafted in Finland.

Product code	201550
Weight	730 g
Lenght	215–225 cm
Blade length × width	56 × 15 cm
Material	Carbon

KS SEA TOURING

The sea touring paddle is a with highly respected mid-sized blade design. Excellent low angle style paddle made for sea kayakers who want light and easy strokes with gentle power yet good cruising speed.

Light yet durable fibre reinforced plastic blades with fibreglass shaft. Fully adjustable between 215–225 cm in any angle. Light swing weight, comfortable touch grip for good touch. Made in Finland.

Product code	201570
Weight	980 g
Lenght	215–225 cm
Blade length × width	61 cm × 15 cm
Material	Blade: fibre reinforced plastic, Shaft: fibreglass



“I have used the Inuksuk from Kajak Sport for both rolling and paddling. Last year I circumnavigated Senja Island using only Inuksuk paddle, and am pleased with it. (7 day trip) I especially like the round tip and sharp blade. It make the paddle silent in the water when you slice it in the right angle. Also like the adjustable loom, and the edges make it easier to hold the paddle in the right angle. The paddle is made of carbon, but still it has a little flex. That is also good thing for your forearms if you paddle distance.”

— Frode Wiggen, Norway



“What are the strengths of the Inuksuk? I think the entire Inuksuk is a strong paddle. I was quite new to Greenland paddling, when I got the Inuksuk. I were really surprised about how much power you can put with it in the water.

Like Yoda said: With great power comes great responsibility. So the other thing I appreciate is the ferrule. The problem with most of the divided paddles is the stiffness. With the ferrule of the Inuksuk I don't care too much about dirt or wearing. It just works.”

— Eike Köhler, Germany



Photo: Frode Wiggen

KS SHAFT FERRULE S NEW!

This is a new universal ferrule unit to make good quality split paddle with free feather and length adjustment. Works instantly both right and left handed. Simple and smooth construction with very easy and reliable operation. KS Shaft ferrule is corrosion free and friendly to all type of waters. Together with the detailed design and hightech plastic we have succeeded in making a strong and tireless ferrule unit which will be a trouble-free and long lasting solution for your paddle.

General dimensions

Weight 20 g

Lenght 50 mm



Product code	Shaft outer ø	Shaft Inner ø
210304	26,3 mm	24,0 mm
210606	27,0 mm	24,5 mm

KS SHAFT FERRULE

This is a universal ferrule unit to make good quality split paddle with free feather and length adjustment. Works instantly both right and left handed. Simple and smooth construction with very easy and reliable operation. KS Shaft ferrule is corrosion free and friendly to all type of waters. Together with the detailed design and high tech plastic we have succeeded in making a strong and tireless ferrule unit which will be a trouble-free and long lasting solution for your paddle.

General dimensions

Weight 31 g

Lenght 55 mm



Product code	Shaft outer ø	Shaft Inner ø
211212	28,5 mm	26,0 mm
211214	28,5 mm	26,5 mm
211412	29,0 mm	26,0 mm
211414	29,0 mm	26,5 mm
211416	29,0 mm	27,0 mm
211612	29,7 mm	26,0 mm
211614	29,7 mm	26,5 mm
211616	29,7 mm	27,0 mm
211618	29,7 mm	27,5 mm
211816	30,0 mm	27,0 mm
211818	30,0 mm	27,5 mm
211820	30,0 mm	28,0 mm
211900 (oval)	36,5 mm / 28 mm	34 mm / 25,5 mm

KS SHAFT ADJUSTMENT TUBE NEW!

Kajak Sport shaft adjustment tube is a result of experienced engineering skills and advanced material knowhow.

Optimal construction together with high end carbon reinforced material has made this tube strong and



precise adjustment tube for all kinds of paddles. Exact and equal wall thickness, smooth edges, solid black color and bright recessed white scale together with highly rewarded Kajak Sport Shaft Ferrule will make them perfect adjustment system for any kind of paddle. New shaft adjustment tube is 25% stronger than standard GF version and it is available in all popular sizes.

Product code	Product	Material	Lenght / Shaft outer ø
213212	KS Shaft Adjustment tube	CRP	240 mm / 25,9 mm
213214	KS Shaft Adjustment tube	CRP	240 mm / 26,4 mm
213216	KS Shaft Adjustment tube	CRP	240 mm / 26,9 mm
213220	KS Shaft Adjustment tube	CRP	240 mm / 27,9 mm
213118	KS Connector tube	GF	250 mm / 27,4 mm
213104	KS Connector tube (Ferrule S)	GF	250 mm / 23,9 mm
213106	KS Connector tube (Ferrule S)	GF	250 mm / 24,4 mm

KS DROP RINGS, retrofit



Deep shaped drop ring which prevents water from running down your paddle shaft. Easy to retrofit, no tools required. Made of durable flexible material. Suitable for 28–30,5 mm shaft.

Product code	212130
Weight	16 g/pair
Width	53 mm
Height	17 mm
Paddle shaft outer	28–30,5 mm

KS PADDLE LEASH (Recreational)



Light and simple paddle leash made of \varnothing 4 mm bungee. Hook and loop closures secure one end to your paddle and the other to deck rigging. Simple leash for recreational use.

Product code	263210
Weight	21 g
Length	1 m

KS PADDLE LEASH (Pro)



Strong and reliable paddle leash for professional use. Light and simple with quick release system which can be used in rough conditions.

1 meter leash is made of \varnothing 4 mm bungee. Secure deck ball fastening system for deck lines and handy velcro fix for paddle.

Product code	263220,1
Weight	22 g
Length	1 m

KS HAND PUMP

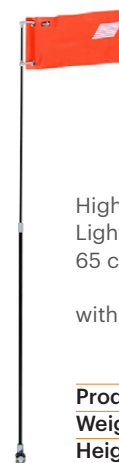


KS Hand Pump

Good quality and reliable hand pump for kayakers with light function. Integrated attachment bungee and low profile floatation foam. Durable high quality Aisi 316 steel shaft. Removable caps for cleaning. Ergonomic two compound handle with finger protection.

Product code	263320
Weight	300 g
Length	480 mm

KS SAFETY FLAG, telescopic



High visibility safety flag for kayaks. Light telescopic construction from 65 cm up to 118 cm.

Easy snap on and off deck adapter with one screw fixing system.

Flag has high quality reflectors.

Product code	263410,1
Weight	128 g
Height	118 mm

KS SELF RESCUE GRIPS FOR PADDLE



The Kajak Sport innovative grips for self-rescue with paddle float. Easy to retrofit, strong and simple to use. The grips increase your safety and help you remarkably in paddle float rescuing.

Product code	410110
Weight	142 g
Length	65 mm
Width	40 mm
Height	35 mm

KS SELF RESCUE CLAMPS



The world's most simple and unique safety device for paddle float rescuing from Kajak-Sport. The clamps are made to hold the paddle on the rear deck of a kayak when the capsized kayaker is doing a paddle float rescuing.

Fully automatic locking feature and single hand opening mechanism is secure and extremely simple to use even with cold hands or gloves on. With the KS Self Rescue clamps normal paddle float rescuing technique becomes a lot more reliable and quicker which increases safety in all weather conditions. All steel parts used are high Aisi 316 quality. Installation in a flat (level) section of kayak.

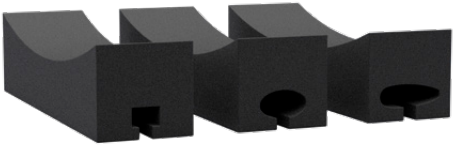
Product code	410200
Weight	298 g
Length	103 mm
Width	46.5 mm
Height	58 mm

TRANSPORTATION






KS J-Carrier

KS U-FOAMBLOCKS



Definitely the most handy and simple roof rack foams for kayak transportation to any kind of car. The KS Foam Block is extremely easy to place on and take off when ever needed. No tools needed.

Weight	165 g/pair
Length	405 mm
Width	105 mm

	Model: square Product Code: 276110
	Model: oval Product Code: 276111
	Model: airfoil Product Code: 276112

KS KAYAK STRAP 2,0–5,5 M



Simple, safe and innovative buckle strap to tie down the kayak to a car. The unique buckle is quick and secure in use. The strap won't loosen up like with regular spring loaded buckles and it doesn't require any additional knots. Accurately curved buckle doesn't scratch the kayak and therefore it doesn't require any additional textile

Non slip — Non Scratch — Quick

Product code:	276308 (2,0 m)
	276309 (2,5 m)
	276310 (3,5 m)
	276320 (5,5 m)

KS J-CARRIER NEW!



Solid and safe tranport carrier for kayaks. J-Carrier has changeable roofrack adapters and it is fully compatible with Thule roof rack profiles (square, oval and wingbar). J-Carrier has integrated paddle holder for easy paddle roof transport. It is easy to install and remove from roof racks without any tools. Transport carrier is made of carefully selected high quality materials that are fully corrosion free.

Product code	276210 (Square/Oval)
	276230 (Airfoil)
Weight	3 095 g
Length	500 mm
Width	350 mm
Height	150 mm

HATCHES

Kajak Sport is the best known and the most respected manufacturer of watertight kayak hatch covers in the world. We supply hatch covers and rims for kayak manufacturers, retailers, small builders and hobbyists to over 30 countries all over the world.

KAJAK SPORT ORIGINAL RUBBER COVER (VCP)

NEW!



KS (VCP) round hatch 19.5 cover

Product code	303210
Weight	297 g
Width	213 mm
Height	29 mm



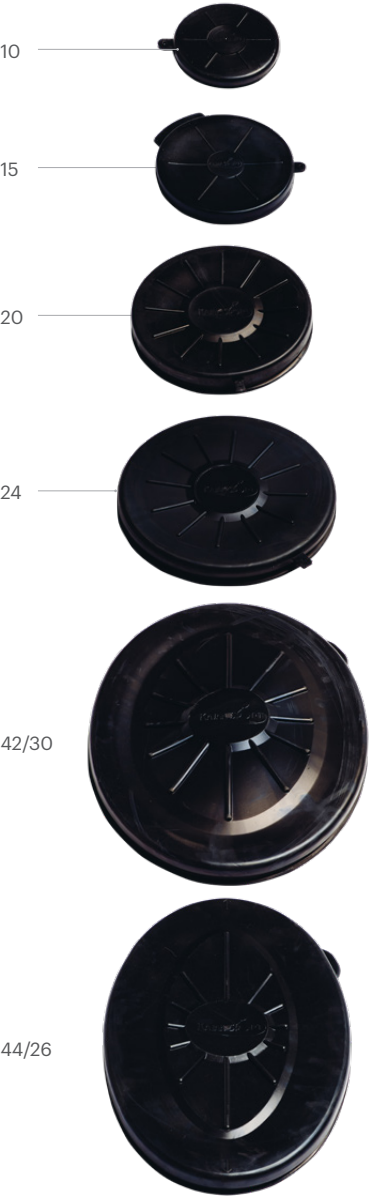
KS (VCP) oval hatch 41/22 cover

Product code	303410
Weight	750 g
Lenght	279 mm
Width	455 mm
Height	27 mm

KAJAK SPORT ORIGINAL RUBBER COVER

Kajak Sport original hatch cover series is made of real rubber. 100% watertight hatch cover solution is created for the most demanding “expedition” use, when the cover is used in aberrant conditions and when

the maximum reliability is essential. The cover is equipped with both inside and outside leash holders. Its material is extremely durable and long-lived. It is also fully UV-protected.



KS round hatch 10 cover

Product code	301110
Weight	67 g
Width	119 mm
Height	17 mm

KS round hatch 15 cover

Product code	301310
Weight	163 g
Width	170 mm
Height	20 mm

KS round hatch 20 cover

Product code	301510
Weight	326 g
Width	220 mm
Height	33 mm

KS round hatch 24 cover

Product code	301710
Weight	412 g
Width	270 mm
Height	32 mm

KS oval hatch 42/30 cover

Product code	302210
Weight	822 g
Width	340 mm
Lenght	460 mm
Height	30 mm

KS oval hatch 44/26 cover

Product code	302410
Weight	715 g
Width	300 mm
Width	478 mm
Height	30 mm

KAJAK SPORT CLICK-ON COVER

The click-on cover is a light and vigorous kayak hatch cover which is made by combining two different materials together. The rigid centre part reaches to top of the hatch rim and secures that the cover can't be pushed inside due to force of a wave. Soft edge seals and attaches properly to the hatch rim and gives good watertight contact between the cover and the rim.

Stylish click-on cover is waterproof and extremely easy to use.

There are both inside and outside leash holders and a handy opening grip. Both materials are durable- and fully UV-protected. The click-on cover is used all over the world and it has found its way especially to the deck of the lightand ultralight composite kayaks. Numerous tests, reviews and praxis prove that this cover is a reliable and watertight cover solution even in rough conditions. The click-on cover is recommended to be used with KS-hatch rim.

KS round 15 hatch click-on cover

Product code	301311
Weight	112 g
Width	170 mm
Height	20 mm

KS round 20 hatch click-on cover

Product code	301511
Weight	182 g
Width	215 mm
Height	28 mm

KS round 24 hatch click-on cover

Product code	301711
Weight	292 g
Width	266 mm
Height	30 mm

KS oval 42/30 hatch click-on cover

Product code	302211
Weight	646 g
Legnth	458 mm
Width	335 mm
Height	30 mm

KS oval 44/26 hatch click-on cover

Product code	302411
Weight	632 g
Legnth	474 mm
Width	288 mm
Height	30 mm



KAJAK SPORT HATCH RIM

The KS Hatch Rims are precision-made for KS Hatch Covers. The rim is made of durable and gluable ABS-plastic. Using our covers together with our rims you can have the best possible water tightness and easy access to your kayak cargo space.

Our hatch rim can basically be attached to all kayaks (e.g. fibreglass, reinforced

plastics, polyethylene mixtures, ABS plastic etc). Before gluing, find out and confirm suitable glue and primer for both materials.

The installation instruction for most common materials can be downloaded from our web-pages.

KS round hatch 10 rim

Product code	301120
Weight	32 g
Width	131 mm
Height	20 mm

KS round hatch 15 rim

Product code	301320
Weight	68 g
Width	185 mm
Height	21 mm

KS round hatch 20 rim

Product code	301520
Weight	122 g
Width	234 mm
Height	33 mm

KS round hatch 24 rim

Product code	301720
Weight	128 g
Width	279 mm
Height	30 mm

KS oval hatch 42/30 rim

Product code	302220
Weight	297 g
Width	346 mm
Length	470 mm
Height	31 mm

KS oval hatch 44/26 rim

Product code	302420
Weight	291 g
Width	300 mm
Length	486 mm
Height	30 mm



KAJAK SPORT LRC-HT HATCH COVER

Kajak Sport LRC-HT series is our latest hatch development. 'HT' describes the hard top in the centre of the cover, like in click-on cover. But in LRC-HT the rigid centre area is just smaller which increases stretch ability

of the cover to improve watertightness and allow more variation on the accuracy of measurement of the rim. Covers are normally produced in black/black colour combination.



KS round hatch 15 LRC-HT

Product code	301314
Weight	152 g
Width	170 mm
Height	20 mm

KS round hatch 20 LRC-HT

Product code	301514
Weight	255 g
Width	220 mm
Height	30 mm

KS round hatch 24 LRC-HT

Product code	301714
Weight	380 g
Width	270 mm
Height	28 mm

KS oval hatch 42/30 LRC-HT

Product code	302214
Weight	742 g
Length	465 mm
Width	345 mm
Height	30 mm

KS oval hatch 44/26 LRC-HT

Product code	302414
Weight	744 g
Length	485 mm
Width	300 mm
Height	30 mm

KAJAK SPORT LRC HATCH COVER

The Light Rubber Cover (LRC) Hatch series is our latest hatch development together with the LRC-HT series. Elasticity describes this series most incisive. This cover is made for an option for the original rubber cover. The LRC has a good stretch ability to work watertight in PE-rims. It is lighter than the original rubber cover and has more elegant visual surface quality. The lightness can

easily be noticed as this series really floats! The profile of the LRC-series is identical compared to the original rubber covers, so they have equal fitting properties to various rims, however original rubber cover is possible to over stretch thanks to the superior elasticity properties of the material. The LRC material is fully UV and weather protected for long use.



KS round hatch 15 LRC

Product code	301315
Weight	142 g
Width	170 mm
Height	20 mm

KS round hatch 20 LRC

Product code	301515
Weight	226 g
Width	220 mm
Height	30 mm

KS round hatch 24 LRC

Product code	301715
Weight	339 g
Width	270 mm
Height	28 mm

KS oval hatch 42/30 LRC

Product code	302215
Weight	698 g
Length	445 mm
Width	345 mm
Height	30 mm

KS oval hatch 44/26 LRC

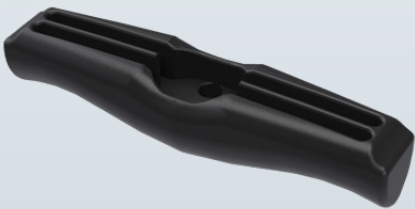
Product code	302415
Weight	677 g
Length	485 mm
Width	300 mm
Height	30 mm

DECKFITTINGS



KS Ergo toggle 113/25

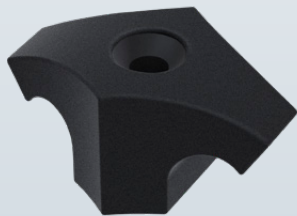
KS ERGO TOGGLE 113/25



The ergonomic carrying toggle for kayaks and canoes. Made with injection moulding technique to get it as light and strong as possible. Compatible with KS Deckfitting 50/34/13, to end.

Product code	401110
Weight	27 g
Length	110 mm
Width	27 mm
Height	24 mm

KS RECESSED DECKFITTING ø 5 MM



The recessed deckfitting for kayak deck- and safetylines. Strong and reliable fitting to be used with 5 or 6 mm ropes. The fitting is made for 5 mm or optional 6 mm attachment screw.

Product code	402110
Weight	9 g
Length	40 mm
Width	24 mm
Height	18 mm

KS RECESSED DECKFITTING ø 5 MM, round/cross



The recessed deckfitting for kayak deck lines and safety lines. Light but reliable fitting to be used with 5 or 6 mm ropes. The fitting is made for 5 mm attachment screw.

Product code	402210
Weight	4 g
Length	32,5 mm
Width	32,5 mm
Height	20 mm

KS DECKFITTING 40/13, ø 5 MM



The surface deckfitting for kayak deck lines and safe tyelines. Strong and reliable fitting to be used with 6 to 8 mm ropes. The fitting is made for 5 mm attachment screw.

Product code	403210
Weight	7 g
Length	40 mm
Width	40 mm
Height	13 mm

KS DECKFITTING 34/11 ø 5 MM



The surface deckfitting for kayak deck lines and safety lines. Strong and reliable fitting to be used with 5 mm rope. The fitting is made for 5 mm or optional 6 mm attachment screw.

Product code	403110
Weight	6 g
Length	34 mm
Width	34 mm
Height	11 mm

KS DECKFITTING 50/34/13, ø 6 MM for end



The surface deckfitting for kayak deck lines and safety lines. Strong and reliable fitting to be used with 5 mm rope. The fitting is made for 5 mm or optional 6 mm attachment screw.

Product code	403110
Weight	8 g
Length	50 mm
Width	34 mm
Height	13 mm

KS ROPE LOOP



This extra deckfitting can be installed on the top of the normal KS Deck Fitting by using the same attachment screw. Or it can be installed separately in any other parts on the deck if wanted. The fitting is made for 5 mm attachment screw.

Product code	404110
Weight	2 g
Length	15 mm
Width	19 mm
Height	15 mm

KS DECK BALL 32 MM



Two piece deck ball which can easily be added to kayak deck lines and bungees. Lock the position simply by adding a knot inside. The deck ball gives significant help when storing and using spare paddle or other deck items which need to be used while seated.

Product code	412110
Weight	7 g
Length	29 mm
Width	32 mm
Height	32 mm

KS ROPE END PLUG



Kajak Sport new terminal end for rope is made for finishing and attaching kayak deckline without any ugly looking and unpractical knots. This new rope end plug is an easy and stylish way to fix 5-6 mm ropes.

Product code	405110
Weight	1 g
Length	13 mm
Width	13 mm
Height	13 mm

KS FLEX DECK BALL 26/36, retrofit

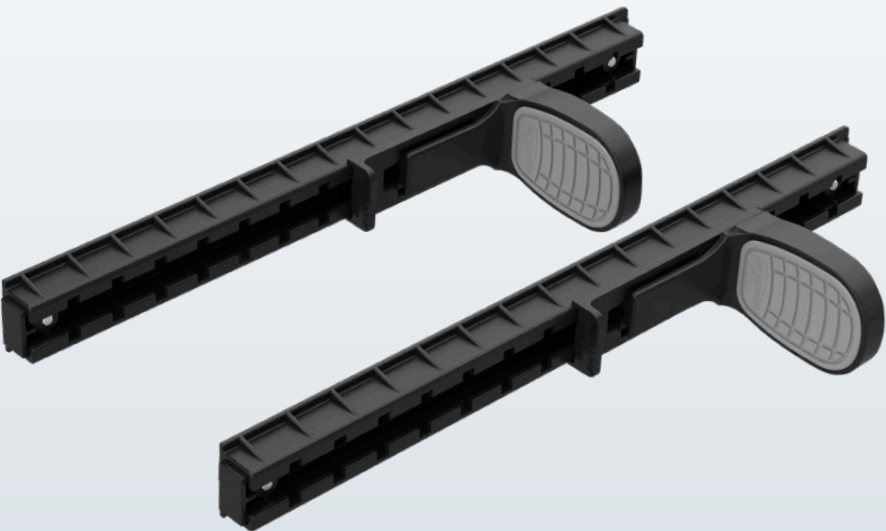


Unique two piece flexible deck ball that can be retrofitted to any kayak without rope work. The Flex Deck ball can be fitted to both deckline and bungee. Location can be locked with hidden knot inside. Non-scratching material and flexible construction reduces the risk of kayak deck damage.

Product code	412120
Weight	7 g
Length	36 mm
Width	26 mm
Height	26 mm



FOOTREST & STEERING



KS FOOTREST

The footrest system is one of the most innovative footrests available in the world. With the KS Footrest you always have solid support for your feet which is the basic rule for efficient paddling. The footrest consist of a solid rail and an innovative pedal part with self pivoting system for adjusting and soft grip material in the middle of the pedal. The footrest also has a special pedal lock for securing the adjustment and end plugs for

proper fastening of the rail. The adjusting of the footrest is smart and simple. It can be done only with feet. The position of the pedals can be adjusted while seated. The good quality and the rigid structure combined together with the best materials ensure safe and easy use for a long time.

Product code	501100
Weight	538 g
Length	410 mm
Width	22 mm
Height	40 mm

KS FLEX-JOINT STEERING SYSTEM

The steering system is based on the KS Footrests but it's with larger self pivoted two compound steering pedals. The steering pedal is connected to the footrest with special flex-joint polymer pivot construction which allows comfort & precise steering quality with any type of rudder. The Flex-Joint System is totally rust and carefree in all conditions and there is no jamming possibility thanks to the

innovative construction. The steering pedal has a soft and stylish grip in the centre part to prevent slipping and it increases comfort. The steering ropes adjust automatically when you move the pedals. However the system includes KS Fine Adjustment Pieces to adjust the ropes in the installation or maintenance phase. The Flex-Joint Steering System is attached to the footrest pedal with two screws which means the steering pedals can be retrofitted easily anytime later to KS Footrests.

Includes: Complete kit for steering, KS Footrest and KS Flex-Joint Steering System, with full dyneema steering ropes and attachment screws.



KS Flex-Joint Steering System, S

Product code	512111
Weight	824 g
Width	102 mm
Height	155 mm

KS Flex-Joint Steering System, L

Product code	512112
Weight	854 g
Width	110 mm
Height	178 mm

KS FASTENER FOR FOOTREST



The fastener for footrest to be laminated inside the hull. A secure way to attach the footrest instead of using screws. Includes nylock nut (material: Aisi 316).

Product code	501117
Screw	5 x 25 mm
Weight	9 g
Length	43 mm
Width	23 mm

KS FINE ADJUSTMENT FOR STEERING ROPE



The Kajak-Sport fine adjustment piece for steering rope is specially designed for adjusting the length of the steering rope in our steering system. The adjustment margin is 31 cm and the major features are the non-slide action and the easy usage.

Product code	512210
Weight	6 g
Length	65 mm
Width	18 mm

RUDDER



KS Navigation rudder pin 42 mm

KS NAVIGATOR RUDDER

The true specimen of our continuous product development skill. The navigator is a unique rudder system. Instead of rotating the blade around the axle it slides smoothly on the deck and back to the water. Storing the blade vertically on the deck of the kayak when unemployed minimizes the wind surface and helps when the kayak is stored or transported. Completely redesigned foil plastic blade minimizes the drag of

the rudder and improves the slide together with the new two-piece rockerpart. The mechanism is simple and more reliable than any spring loaded rudder system. The blade also has a new locking mechanism. It locks down when deployed and opens itself when lifted up. The locking mechanism can simply be switched off if wanted in club or rental use to improve carelessness.



KS NAVIGATOR RUDDER, pin 42 mm

Specification: 42 mm pin requires optional rudder sleeve.

Includes: Rudder head part, rocker part, blade, lift-up rope, revert bungee, locking knob mechanism, rope stopper and rope for it.

Navigator Rudder, pin 42 mm with longer 600 mm rudder blade the product code is 530211.

Product code	530210
Weight	657 g
Height	500 mm

KS NAVIGATOR RUDDER, pin 85 mm

Specification: 85 mm pin is installed to a hole in the stern of the kayak, no additional sleeve required (pin diameter 10 mm)

Includes: Rudder head part, rocker part, blade, lift-up rope, revert bungee, locking knob mechanism, rope stopper and rope for it.

Navigator Rudder, pin 85 mm with longer 600 mm rudder blade the product code is 530251.

Product code	530250
--------------	--------

KS RUDDER SLEEVE LAMINATION



Rudder sleeve made of Aisi316 quality metal, extremely durable. Includes attachment bar for lamination.

Product code	530450
Weight	30 g
Inside diameter ø	10 mm

KS RUDDER SLEEVE STD PLASTIC



Plain, injection moulded rudder sleeve for kayak.

Product code	530410
Weight	7 g
Inside diameter ø	10 mm

KS RUDDER SLEEVE STD



Rudder sleeve made of Aisi316 quality metal, extremely durable.

Product code	530460
Weight	26 g
Inside diameter ø	10 mm

KS RUDDER SLEEVE BAR PLASTIC



Injection moulded rudder sleeve for lamination or retrofitting.

Product code	530420
Weight	10 g
Inside diameter ø	10 mm

KS RUDDER SLEEVE BAR



Rudder sleeve made of Aisi316 quality metal, extremely durable. Includes large attachment bar for retrofitting.

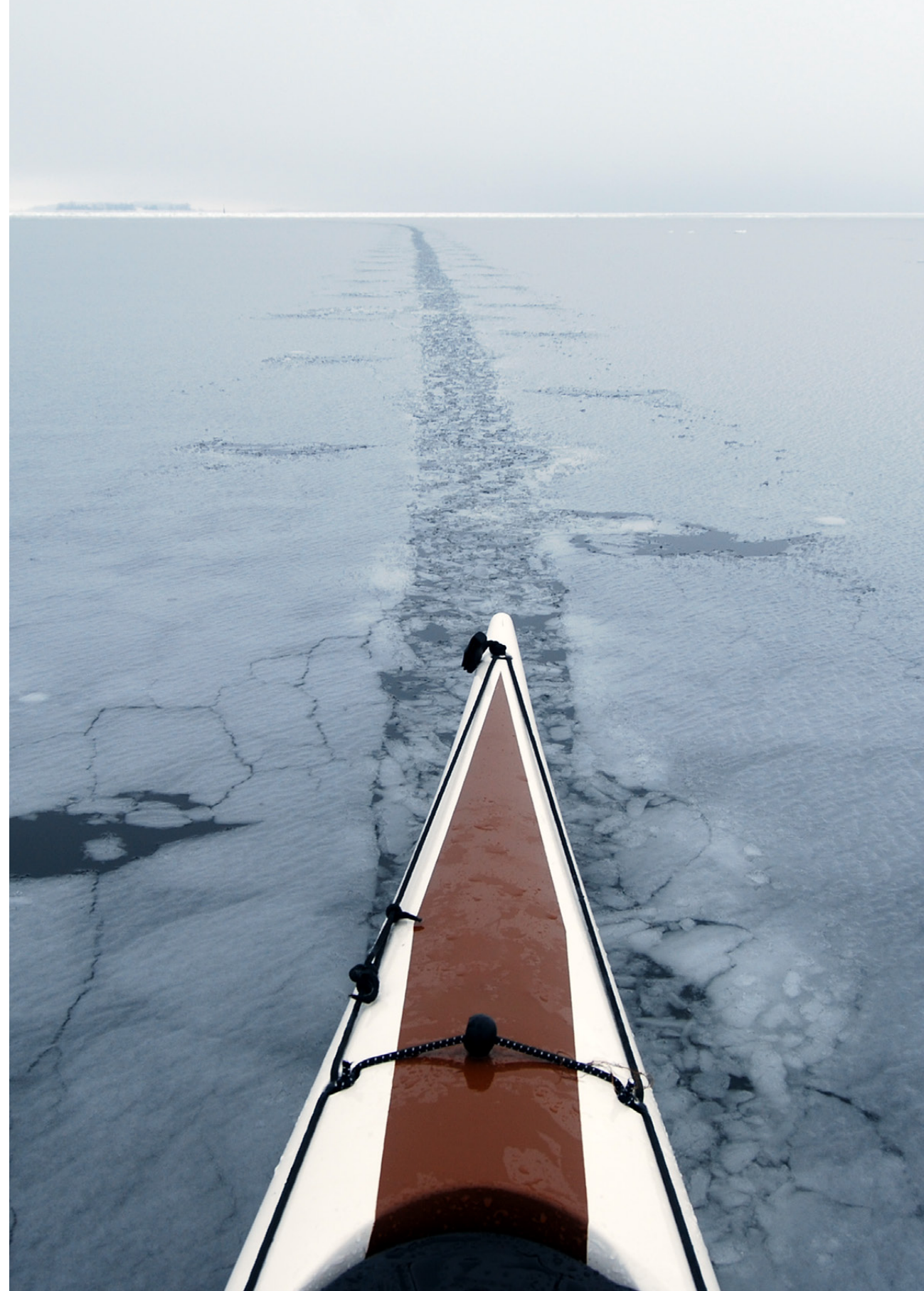
Product code	530470
Weight	35 g
Inside diameter ø	10 mm

KS PLASTIC PLUG RUDDER SLEEVE



End plug for rudder sleeve.

Product code	703222
Weight	1 g



SKEG



Skeg System 4

SKEG SYSTEM 4, rope deployed NEW!

Skeg System 4 is our latest skeg concept. Foil blade is operated with dyneema rope. Rope is simple, light, friction and corrosion free coupling that does not kink. Blade has unique rope adjuster to re-adjust the rope length in necessary. Blade has easy snap in connection which makes it easy to install and remove. Blade is equipped with corrosion free spring which allows free movement upwards when hitting in a obstacle to prevent damages.

Skeg system 4 has (3) different skeg boxes flange variations:
(1) Without flange
(2) Flat flange
(3) Screw flange

Skeg is operated with new kind of Skeg control unit. Skeg control unit 4 has low profile control button to allow smooth recessed installation close to the cockpit area. New control unit is precise and stylish. Button is automatically locked in to it's position to hold the blade in correct position at all times.

Control unit and skeg box are equipped with specially designed Tube connector. Tube connector is quick and corrosion free cable connector offering solid and waterproof connection for 6/4 mm PA-tube. It requires no glue for sealing or installation. Quick to open and close anytime later for maintenance if necessary.

Product code	521110: without flange
	521120: flat flange
	521130: screw flange

KS SKEG CONTROL UNIT 4



Product code	521410
--------------	--------

KS SKEG BLADE 4



Product code	521310
--------------	--------

KS ADAPTER BOX FOR SKEG CONTROL 4



Product code	521710
--------------	--------

KS SKEG BOX 4



Product code	521211: without flange
	521221: flat flange
	521231: screw flange

KS RETRACTABLE PLASTIC SKEG SYSTEM PRO COMPLETE, wire deployed



With flange

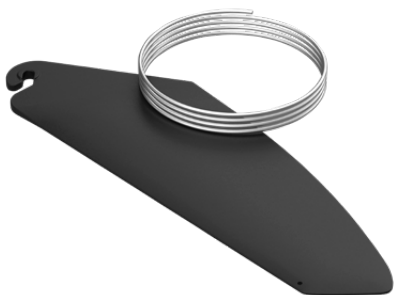
supported to the skeg box with integrated framework. The box is simple to install either from in- or outside in production and it can also be retrofitted. The system also includes completely new skeg control unit. This unit can be installed to the deck of the kayak with or without recess. It is simple and precise in use. Note that the new control unit can be combined with other skeg systems as well.

Includes: Skeg box (with or without flange), skeg blade, AISI 316 wire (3mm), PA tube 6/4 mm, skeg control unit

	w flange	w/o flange
Product code	520100	520101
Weight	618 g	618 g
Box length	418 mm	418 mm
Box height	120 mm	120 mm
Box width	30 mm	15 mm
Wire	ø 3 mm / 250 cm, AISI 316	

New powerful and reliable retractable skeg system pro for composite, thermoformed and polyethylene kayaks. This injection moulded skeg box is made to stay clean from dirt and other obstacles to reduce the risk of jamming. The skeg blade is well

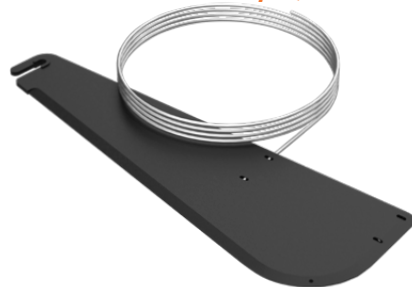
KS RETRACTABLE PLASTIC SKEG PRO, ø 3 mm / 2,5 m wire



Injection moulded foil shape retractable plastic skeg. Replacement skeg blade for skeg system pro. Skeg is made of durable and stiff glass reinforced nylon.

Product code	520110
Weight	310 g
Length	367 mm
Width	6 mm
Height	116 mm

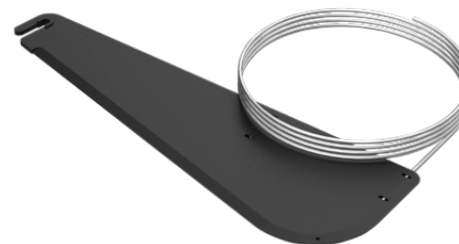
KS RECRactable PLASTIC SKEG, centre wire ø 3 mm / 2,5 m



Injection moulded low profile retractable plastic skeg for all kinds of sea kayaks. The skeg is made of durable and stiff glass reinforced nylon. Skeg box not available. Skeg control system not included.

Product code	520220
Weight	312 g
Length	370 mm
Height	120 mm

KS RECRactable PLASTIC SKEG, end wire ø 3 mm / 2,5 m



Product code	520210
Weight	312 g
Length	370 mm
Height	120 mm

KS CONTROL UNIT



Features: No special recess required and reserves no additional space around. Gluable or screw fastening. Can be retrofitted to any kayaks.

Includes: Skeg control box and plugs for it, rail, control knob and screws. Compatible with all KS-Skegs

Product code	520130
Weight	45 g
Length	160 mm
Width	33 mm
Height	25 mm

KS TUBE CONNECTOR



Product code	521510
Weight	5 g
Length	34 mm
Width	17 mm

KS PLASTIC CONTROL KNOB WITH METAL TUBE



Rigid skeg control system with smooth sliding properties. Requires premade recess on the deck for fitting. Additional PA-pipes (10/8, 8/6 mm) required for cable connections.

Product code	520222
Weight	49 g
Length	330 mm
Width	34 mm
Height	25 mm

KS PLASTIC CONTROL KNOB WITH FIBER TUBE



Light skeg control system with smooth sliding properties. Requires premade recess on the deck for fitting. Additional PA-pipes (10/8, 8/6 mm) required for cable connections.

Product code	520232
Weight	49 g
Length	330 mm
Width	34 mm
Height	25 mm

COCKPIT PARTS

KS Daybox



KS DAYBOX, HIGH NEW!



Unique waterproof quick access dayhatch solution for essential gear. Easy screw in installation does not require tools or glue to be assembled. Daybox can easily be retrofitted to any flat deck surface and it's compatible with all plastic- composite- and wooden kayaks. Capacity of 3,5 litres makes it ideal storage for snacks, camera, water bottle, phone, keys and wallet. We recommend placing any valuables or electronics in a dry bag inside for safe storing. Daybox is available with low and high collar heights to ensure best fitting to multiple deckprofiles and recesses.

Product code	611120
Weight	589 g
Sizes	340 mm
Width	200 mm
Height	154 mm

KS DECKBOX NEW!



Waterproof quick access deckbox for essential gear. Easy and simple to install and remove. Stays well under the deck bungees and is compatible with all kayaks and SUPs. 15 cm hatch cover is ideal to fit snacks, camera, water bottle, phone, keys and wallet in. Deckbox approximate capacity is 4 litres. We recommend placing any valuables or electronics in a dry bag inside the deckbox for safe storing. Deckbox has comfortable carrying grip integrated underneath and special top bungee to hold for e.g. mobile phone or sport device in top of the hatch cover in sight.

Product code	612110
Weight	380 g
Sizes	400 mm
Width	230 mm
Height	125 mm

KS DAYBOX, LOW NEW!



Product code	611110
Weight	589 g
Sizes	340 mm
Width	200 mm
Height	132 mm

KS ERGO SEAT



“Remarkably comfortable” and “Very comfortable” are the sentences which the Sea Kayaker magazine has used to comment our ergo seat. Carefully designed seat suits well for most users.

The seat is simple to install and retrofit to any kayak. Can be fastened with two or four screws. The seat includes fastening points for KS-deluxe backrest

KS Ergo Seat S

Product code	601110
Weight	983 g
Width	375 mm
Height	195 mm

KS Ergo Seat M

Product code	601111
Weight	983 g
Width	405 mm
Height	195 mm

KS Ergo Seat L

Product code	601112
Weight	983 g
Width	435 mm
Height	195 mm

KS FOAM FOR SEAT



Compatible seat foam for KS-ergo seat

Product code 601210

KS FOAM KIT FOR THIGHBRACE, MiL



Self-adhesive thigh foam pair to cockpit

Product code 602110

KS BACKREST DELUXE

KS Backrest deluxe has a 6-point fastening to ensure the best support and adjustment properties. Low profile offers plenty of room for rolling and allows free body rotation for efficient paddling. Deluxe backrest together with KS-ergo seat is highly respected and praised combination among experienced kayakers and sea kayaking magazines. Higher profile offers great extra support for paddlers who have physical problems in back and therefore need additional support. Includes fastening straps.

KS Backrest Deluxe, Low



Type	Low
Product code	603210
Weight	193 g
Width	350 mm
Height	160 mm

KS Backrest Deluxe, High



Type	High
Product code	603211
Weight	206 g
Width	350 mm
Height	202 mm

ACCESSORIES

Product code	Product
701120	Rope 16/2 mm
701130	Rope 16/3 mm
701140	Rope 16/4 mm
701150	Rope 24/5 mm
701155	Rope 24/5,5 mm with reflective stripe
701160	Rope 24/6 mm
701180	Rope 16/8 mm
701215	Skeg rope, PES-Dynema ø 1,5 mm
701229	Steering rope, Full-Dynema ø 2,0 mm
701330	Shock cord ø 3 mm, color
701340	Shock cord ø 4 mm
701341	Shock cord ø 4 mm, color
701350	Shock cord ø 5 mm
701355	Shock cord ø 5 mm with reflective stripe
701360	Shock cord ø 6 mm
701430,1	Wire, Hst ø 3mm/2,5m, bag
701540	PA-tube 6/4 mm for steering rope
701560	PA-tube 8/6 mm
701580	PA-tube 10/8 mm
701621,1	Rubber net, 50cm,10 eyes, bag

KS BUSHING FOR PA-TUBE 6/4 MM



Product code	703210
Weight	2 g
Sizes	42,5 mm
Width	9 mm
Height	8,5 mm

KS TUBE CLAMP



	6 mm	8 mm
Product code	703220	703221
Weight	1 g	2 g
Sizes	29 mm	31 mm
Width	15 mm	15 mm
Height	10 mm	13 mm

KAYAKING THE SEVEN (PLUS) SEAS: THE DEALERS

HERE YOU CAN FIND LISTED ALL OUR REGISTERED DEALERS.
IF YOU ARE UNABLE TO FIND A LOCAL DEALER, YOU CAN
ALWAYS ASK FOR HELP FROM INFO@KAJAKSPORT.COM



AUSTRALIA

- **East Coast Kayaking**
Melbourne VIC
- **Expedition Kayaks**
Miranda, NSW
- **Les Allen Kayaks**
Rockingham, WA
- **Mirage Sea Kayaks**
West Gosford, NSW
- **Sydney Harbour Kayaks**
Sydney NSW

CANADA

- **Malley Kayak**
Lantz, NS
- **Tutjak Composites Inc**
Trois-Rivières, QC
- **Ocean River Adventures**
Victoria, BC

CZECH REPUBLIC

- **Stanislav Klokočník**
Jablonec nad Nisou

DENMARK

- **Kajak Freak** Vinderrup
- **Kajakbiksen** Rudkøbing
- **Kano & Kajak Butikken**
Søborg
- **Kanokajakcenter.dk**
Lyngby
- **Nicus Nature ApS**
Svendborg
- **Outdoor Sports Vejle**
- **Roneklint Kajakcenter**
Præstø
- **Struer Kajak A/S** Struer

FINLAND

- **Eräketu Oy** Nokia
- **JTB Marin** Pietarsaari
- **Melontapiste** Turku
- **North-West Import Oy**
Espoo
- **Paddelboden/SGU**
Mariehamn
- **Saimaan melonta Oy**
Joutseno
- **Welhonpesä Oy** Klaukkala

FRANCE

- **Bekayak** Brest
- **Breizh Kayak Sarl** La Baule
- **Kayak Attitude** Marseille
- **Sarl Passion Nature**
Saint-Jean-d'Ilac

GERMANY

- **Gadermann Paddle**
Centrum Norderstedt
- **Helmi-Sport** Neustadt
- **Kajak und Meer** Schleswig
- **Kanu-Connection GmbH**
Berlin
- **Kanushop-MiSchaKu -**
Kanuladen am Bodensee
Radolfzell
- **Kayak 4 You** Hamm
- **Sport Schröder GmbH** Unna
- **Walk On The Wild Side**
Bonn
- **Wasser & Wind Sport**
Rügen Altefähr

IRELAND

- **Canoe Centre** Dublin
- **CH Marine Ltd** Skibbereen

ISRAEL

- **Dor Kayak Club/Tomas**
Herdevall Binyamina

ITALY

- **CS Canoe** Sacile (PN)
- **Leos S.r.l. (Ozone Kayak)**
Quinto di Treviso (TV)
- **Nautica Mannino**
Camporotondo Etneo (CT)
- **Tuilik S.r.l** Milano (MI)

JAPAN

- **Faltpia Co., Ltd.** Nagoya
- **Rainbow** Gamagori
- **Water Field Kayaks**
Kumamoto

NETHERLANDS

- **Kanocentrum Arjan**
Bloem Wormer

NEW ZEALAND

- **Long Cloud Kayaks**
& Outdoors Christchurch

NORWAY

- **Alfa Fritid** Kvaløya
- **Eian Fritid A/S** Mjøndalen
- **Olympia Sport A/S** Sem
- **Padlespesialisten A/S**
Arendal
- **Padlespesialisten A/S**
Kristiansand

RUSSIA

- **Waterlogy** Saint Petersburg

SOUTH KOREA

- **BI International - Kayak**
King Busan
- **X-Trip** Seongnam

SPAIN

- **dKayak - La Tienda del**
Kayak Cabo De Palos,
Murcia
- **Omei Kayaks S.L** Lezo
- **Piraguas Mix S.L.** Campos
Balears
- **Portear Kayaks y**
Complementos S.L.U.
Godella
- **Riumar Kayak** Cunit
Tarragona
- **Urkan Kayak S.L** Mutilva
Baja, Navarra

SWEDEN

- **Horisont Kajak** Värmdö
- **Kajak och Utelev** Gräddö
- **Kajakeriet Björkvikstorp**
Ingarö
- **Kajaksidan** Saltsjö-Boo
- **Kanotcentrum**
Göteborg Ab Göteborg
- **MestUte Ab** Eskilstuna
- **OnWater Ab** Karlstad

SWITZERLAND

- **Siesta Oppi Kanu Shop**
GmbH Neuenegg

TAIWAN

- **Kayakgear Inc.** Taipei

UNITED KINGDOM

- **Kari-Tek** Cowlton
- **Reed Chillcheater Ltd**
North Devon
- **Sea Kayak Oban** Oban
- **The Boat House**
Attleborough

UNITED STATES

- **Austin Kayak** Austin, TX
- **Clear Stream Custom**
Water Craft Milan, NH
- **Kayak Academy**
Issaquah, WA
- **Kayak Waveology LLC**
Killingworth, CT
- **Newbury Kayak & Canoe**
Newbury, MA
- **Newfound Woodworks Inc**
Bristol, NH
- **Savannah Canoe and**
Kayak Savannah, GA
- **Sea Kayak Connecticut**
Greenwich, CT
- **TopKayaker** Ossipee, NH
- **Virginia Key Outdoor**
Center Miami, FL
- **Wave Paddler LLC**
Tybee Island, GA

Kajak Sport Components Oy
Mikkolantie 10
FIN-28130 Pori
Finland

+358 (0)10 311 0040
info@kajaksport.fi
www.kajaksport.fi

